



an initiative of

Nuffic
meet the world

A non - profit Netherlands organization for international cooperation in education funded by the Dutch government

nuffic neso

Act as representatives of the Dutch knowledge sector abroad

Main tasks Nuffic Neso Indonesia :

- education and research promotion
- institutional cooperation
- Holland alumni network
- manages scholarships : StuNed, SHARE, OTS

nuffic neso



Research in the Netherlands

Peter van Tuijl

The New Normal

- Any educational and research activities can only take place if everyone stays 1.5 metres apart and follows the other rules introduced on the advice of the National Institute for Public Health and the Environment (RIVM) and the municipal health service (GGZ)
- Staff and students may not come to the institution if they have symptoms that could point to the coronavirus

“Now working remotely is the standard, everyone is looking for ways to stay in touch”

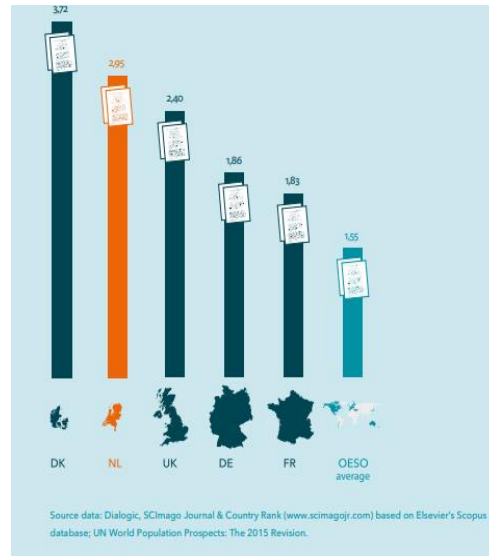
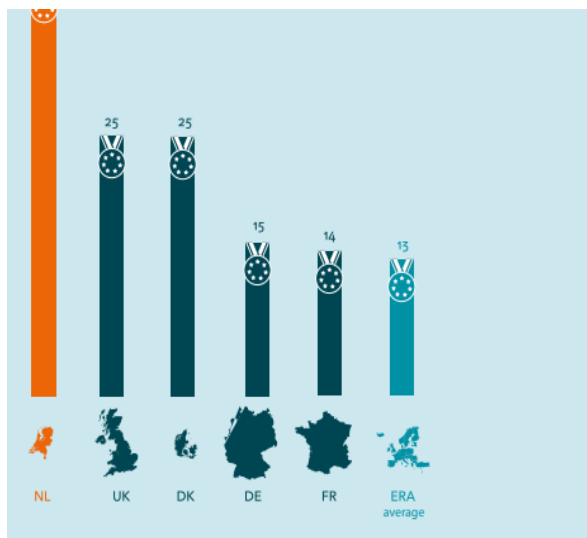
nuffic neso

University ranking



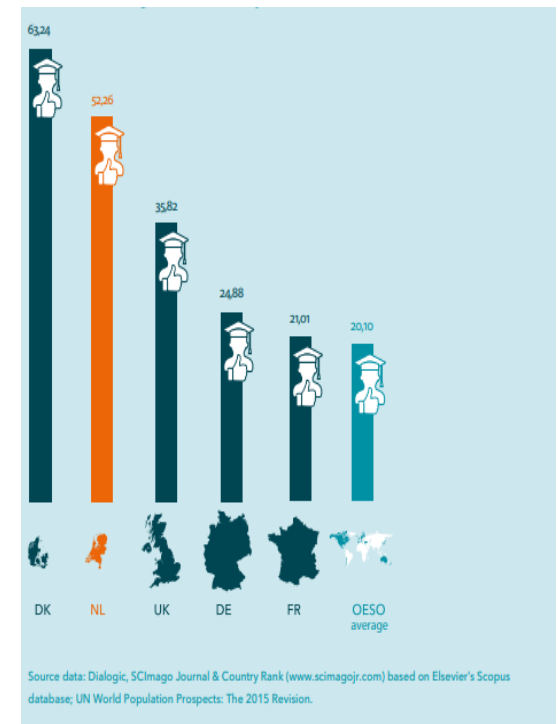
Why the Netherlands?

Numbers of grant from EU funding



Large production of scientific articles

Scientific Citations



The Dutch Government's investments in science

Curious and committed The value of science

Connection with society

Everyone should be able to enjoy the fruits of our scientists' labours



Priorities:
The National Research Agenda for innovative research relevant for society (up to € 130 mln in 2020 and onwards)



Science communication for dialogue with society (€ 1 mln + € 3 mln NWA)



Open Science in the Netherlands and Europe

Breeding ground and harbour for talent

Training and retaining diverse talent provides a strong foundation



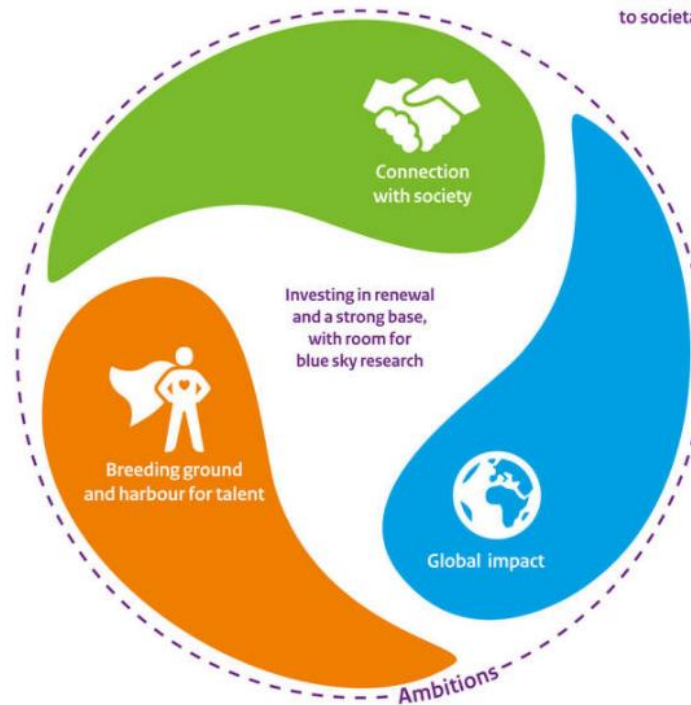
Priorities:
Valuing and rewarding scientific personnel for research, impact and teaching, e.g. more permanent contracts and an education prize



Increase diversity among researchers through:

- 2019 European Gender Summit in the Netherlands and 2020 national action plan diversity in science.
- More women in the natural sciences and researchers with a migration background (€ 5 mln annually)

Vision: fascination and curiosity ensure scientific renewal and breakthroughs. Committed researchers contribute to societal progress.



Global impact

Being one of the world's leaders requires cooperation and a strong system



Priorities:
Ambitious new framework programme "Horizon Europe" with the principles: excellence, impact and open science



World-class research facilities: Square Kilometer Array (€ 30 mln) and Pathfinder Einstein Telescope (€ 1 mln)



New digital research infrastructure (€ 20 mln annually): supercomputer and infrastructure for open science

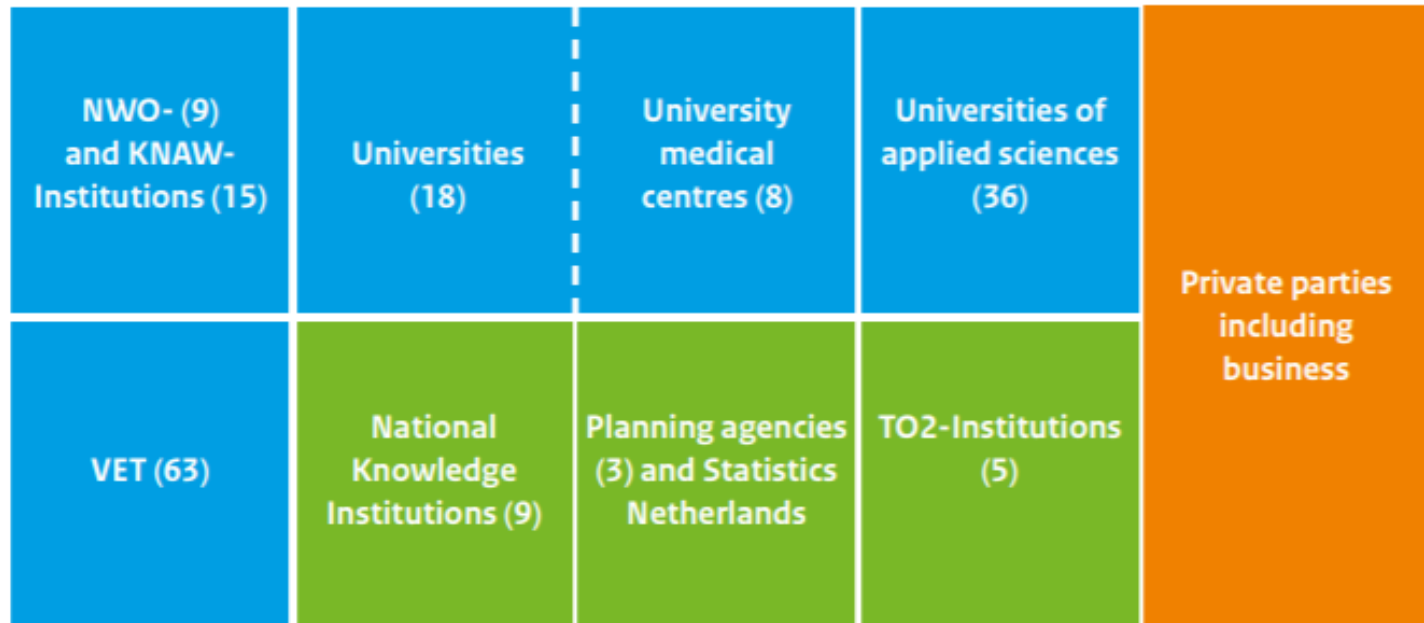


Sector plans for natural sciences and engineering and for social sciences and humanities (up to € 70 mln from 2020)



Strengthening practice-oriented research (up to € 25 mln from 2020)

Structure of the Dutch research system



The Dutch Government provide more than €4.5 billion every year for scientific research
Institutions highlighted in blue are mainly funded by the Dutch Ministry of Education, Culture and Science
Those highlighted in green are mainly funded by other government departments.

Research funding in Dutch Universities

1. first flow : direct government funding
2. second flow : indirect government funding, receive funds from the Dutch Organisation for Scientific Research (**NWO**) and the Royal Netherlands Academy of Arts and Sciences (**KNAW**) for specific research projects
3. third flow : other revenues, such as the European Framework Programmes (FP7 and Horizon 2020), business revenue, the implementation of contract education and contract research

nuffic neso



**BUILDING SOCIAL
RESEARCH CAPACITIES IN
HIGHER EDUCATION
INSTITUTIONS IN LAO PDR
AND MALAYSIA**



brecil.my

With the support of the
Erasmus+ Programme
of the European Union 

BRECIL: 585852-EPP-1-2017-1-MY-EPPKA2-CBHE-JP

EU Erasmus+ BRECIL 'Increasing Social Science Research Capacity'
University of Groningen

Participating Universities in Malaysia and Laos:
National University of Laos (NUOL)
Souphanouvong University (SU)
Universiti Utara Malaysia (UUM)
University of Malaya (UM)



-**Training the Trainers** – to spread knowledge and practice for strategies for combining theory, conceptualizations, literature review, research design, empirical research methods, and analysis for producing high quality social science research.

-**Research Governance** – various levels within a university institution should inspire and guide social science research by individual scholars, research teams, and inter-disciplinary centers - ranging from the department, faculty, and central administration levels, with outreach to national and regional structures (EU, ASEAN) for support and funding for research.

-**Focus on Quality and Social Relevance / Impact** of high quality social science research.

-**Target the Appropriate Journal** - International, Regional (Southeast Asia) or National journal, to share your approach and findings broadly to the relevant scholarly community you wish to reach, typically in English.

Dissemination to citizens and stakeholders, governments and international institutions is important. Prepare short 2-3 page summaries of key results in local languages.

nuffic neso

Study Tour on Research Governance University of Groningen, 21-25 October 2019



nuffic neso

Research Governance Study Tour

Introduction to Research at a Social Science Faculty

System of Integrated Graduate schools.

Inter-disciplinary Institutes, ie. The Aletta Jacobs School of Public Health

Social science Research Institutes i.e. Urban and Regional Studies Institute (URSI)

Ethics and Privacy in Research

Developing Research Talent

The Dutch Research Universities – VSNU

International funding- NUFFIC

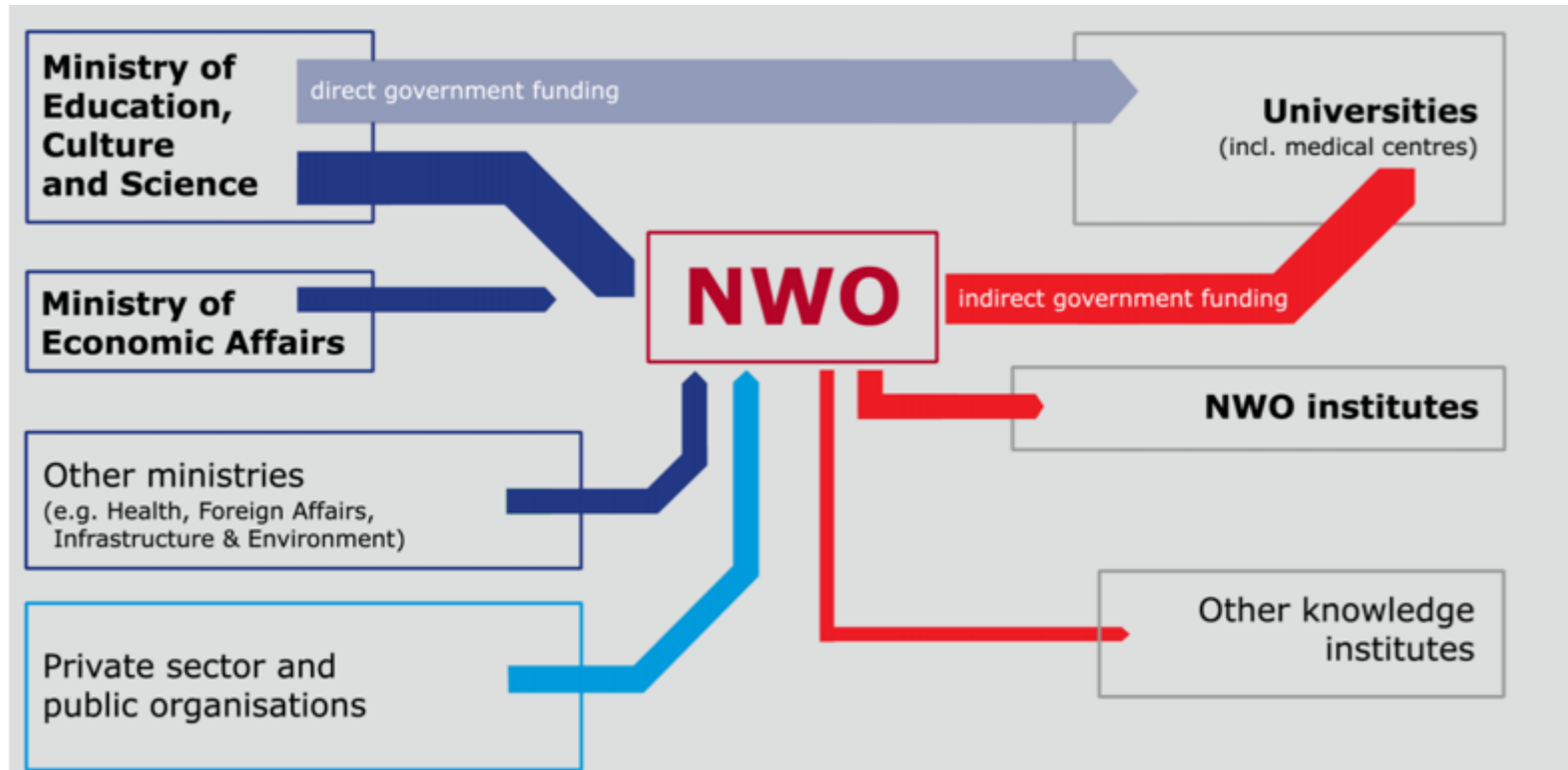


Co-funded by the
Erasmus+ Programme
of the European Union



nuffic neso

NWO's role in research funding





Funding

 Search

- Read aloud
- Mail
- Print
- Share

Open for application
yes 92

NWO division

Grant type

Programme

Specifically for
foreign applicants 9
young researchers 7
minorities 1
female applicants 1

Objective

Deadline

There are 92 grants

Sort: Name A-Z

Aquatic food production

Open for preliminary proposals

Within the Knowledge and Innovation Convenant (KIC) 2020-2023, budget will be available for research on sustainable aquatic production of food and biogenic raw materials at the North Sea and in estuaries. Consortia of academic researchers and public and private partners can apply for funding for interdisciplinary research on the biological, technical, economic and societal aspects of mari- and aquaculture.

Aspasia

Open for application, by recommendation only

Aspasia provides grants to help more female scientists

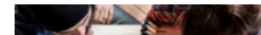
Learn more about NWO funding

- Funding process explained
- Grant application system ISAAC

More funding for researchers

Researchers can also apply for NWO funding at:

- ZonMw (health care)



KNAW supports the international transfer of knowledge and science through funding



[SITE MAP](#) [CONTACT](#) [RSS](#) [NEDERLANDS](#)



KONINKLIJKE NEDERLANDSE
AKADEMIE VAN WETENSCHAPPEN

[HOME](#) | [NEWS](#) | [ABOUT US](#) | [MEMBERS](#) | [INSTITUTES](#) | [ADVISORY WORK](#) | [FUNDS & AWARDS](#) | [INTERNATIONAL](#) | [TOPICS](#)

[> Home](#) [> Funds & awards](#)

Funds

- [Academy Colloquia](#)
- [Academy Ecology Fund](#)
- [Academy Fund for Behavioural Research](#)
- [Academy Medical Sciences Fund](#)
- [Arend Heyting Foundation](#)
- [Conference Grants Fund](#)
- [Dobberke Foundation for Comparative Psychology](#)
- [Evert Willem Beth Foundation](#)
- [Fulbright Scholarship Program](#)
- [Gonda Fund](#)
- [Statesman Thorbecke Fund Programme](#)
- [Van 't Hoff Fund](#)
- [Visiting Professors Programme \(VPP\)](#)
- [Awards](#)
- [Laureates](#)
- [Give to research](#)

FUNDS

The Academy raises and manages private funds meant to encourage research by and knowledge-sharing among young researchers in particular. The programmes consist of travel and research grants, fellowships, awards and project funding.

Would you like to help support research? Private donations are crucial to research and make new initiatives possible. Read more at [Give to research](#).

Academy Colloquia

Academy Colloquia are small, exclusive, Academy-sponsored expert meetings. The aim is to bring together a select international group of no more than fifty top researchers to discuss a subject in which key innovations are expected.

Academy Ecology Fund

The Academy Ecology Fund supports ecological fieldwork in the Netherlands and abroad and ecological research abroad by young ecologists working in the Netherlands.

Academy Fund for Behavioural Research

The purpose of the Academy Fund for Behavioural Research is to promote outstanding behavioural research.

Academy Medical Sciences Fund

The purpose of the Academy Medical Sciences Fund is to promote outstanding research in the medical sciences. The Fund supports two grant programmes for young researchers and one grant programme for medical students.

EXTENSION REGULATION

[Academy Extension Arrangement \(PDF\)](#)

[Training programmes covered by the extension arrangement \(PDF\)](#)

[Ouderverklaring extensieregeling KNAW \(in Dutch\) \(DOC\)](#)

SHARE THE ARTICLE

Pursuing PhD in The Netherlands

4 years minimum for conducting original research and writing a dissertation

Not regarded as Study Program, but as serious research and often in paid employment

Offered in 13 Research Universities, and advertised on job boards

Types of PhD funding in Holland:

- Employed by the institution
- Scholarships or Research Grants
- A PhD next to your Job

Researcher job boards

- ❑ [https:// factcards.nl](https://factcards.nl)
- ❑ [https:// academictransfer.nl](https://academictransfer.nl)

All about a career in Academia, Research and Science in the Netherlands

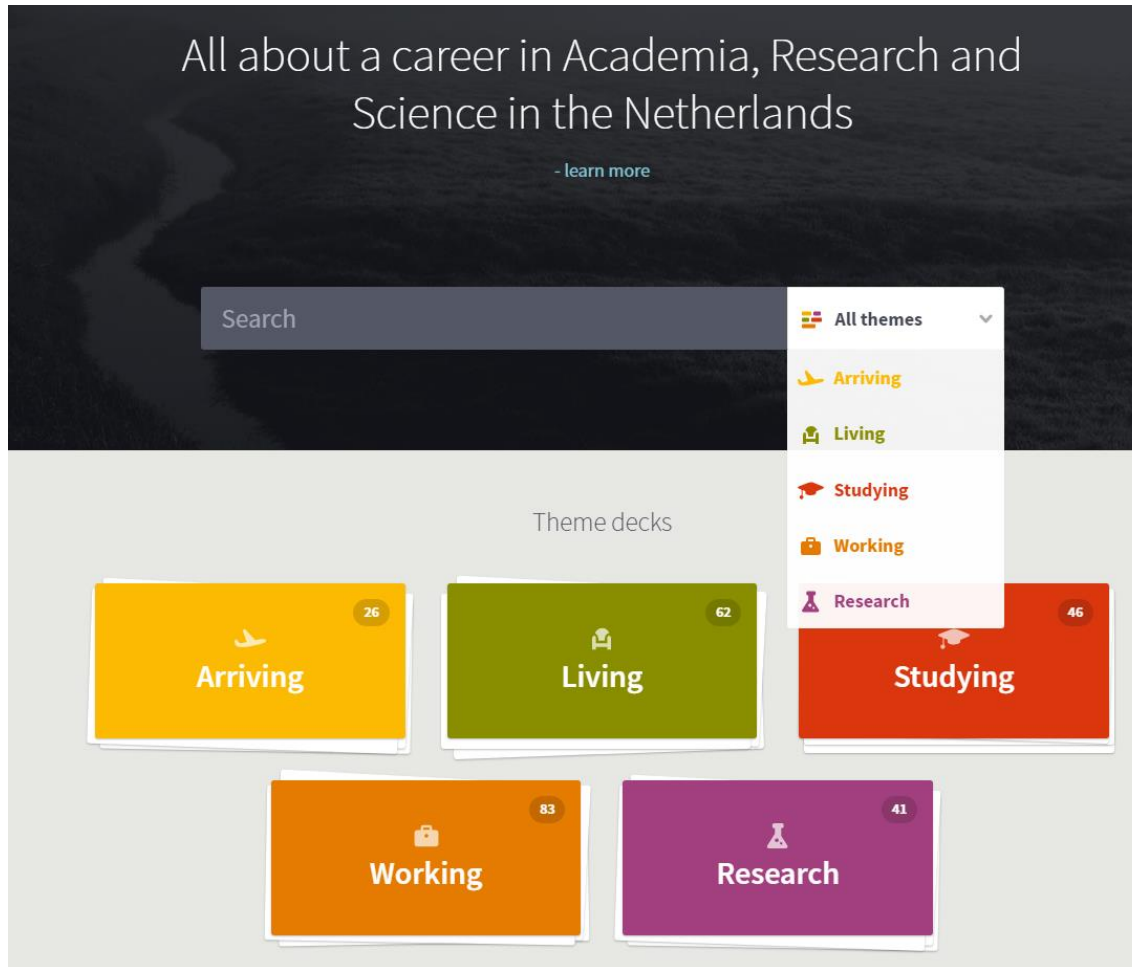
- learn more

Search

- All themes
- Arriving
- Living
- Studying
- Working
- Research

Theme decks

- Arriving (26)
- Living (62)
- Studying (46)
- Working (83)
- Research (41)



Excellence in Dutch Research

- Research**
International collaboration
- Research**
Citation Scores
- Research**
Publication Output
- Research**
International Mobility
- Research**
R&D Spending

Partners & Projects

- Research**
IamExpat
- Research**
PhD candidates Network of the
- Research**
Nuffic
- Research**
EURAXESS
- Research**
Make it in the Netherlands
- Research**
Partner Organisations
- Research**
High Tech NL
- Research**
NFU, The Netherlands
- Research**
VSNU
- Research**
Valorise your Knowledge

Research Funding

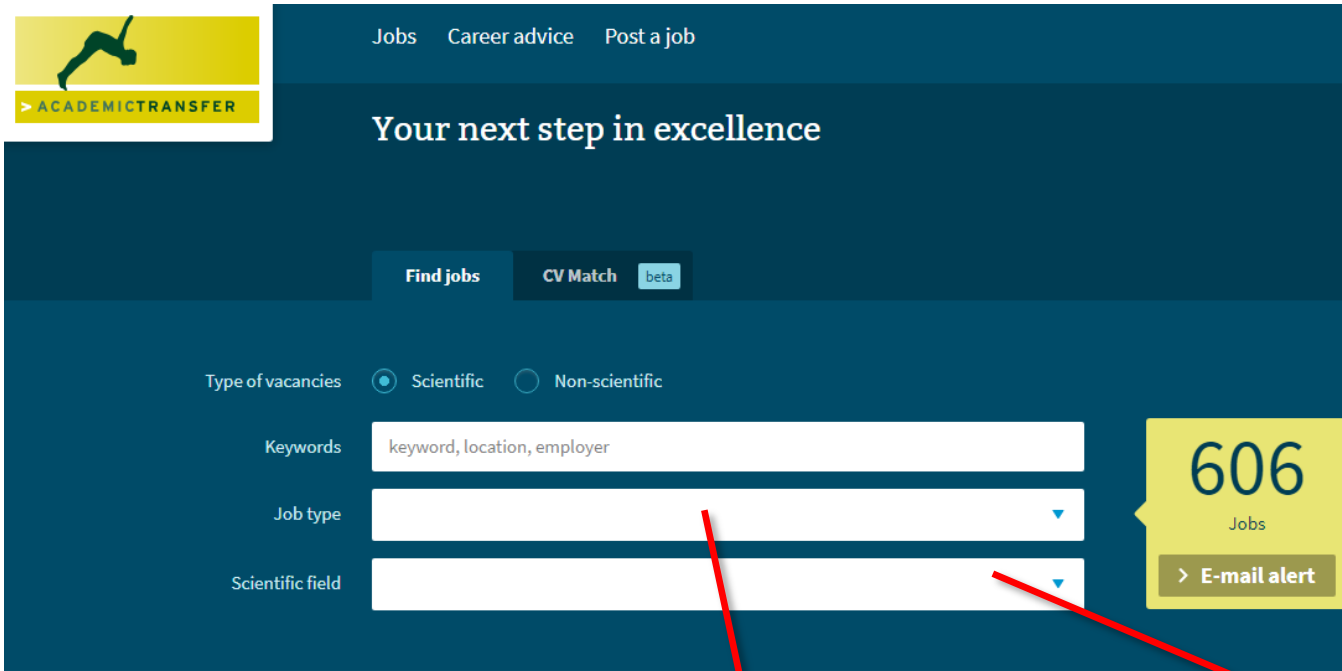
- Research**
Fellowships & Grants
- Research**
Grantfinder

Science Parks

- Research**
TU Delft Science Park
- Research**
Novel-T
- Research**
Leiden Bio Science Park
- Research**
Utrecht Science Park
- Research**
Amsterdam Science Park

Top Sectors

- Research**
Top Sectors
- Research**
Energy Sector
- Research**
Logistics
- Research**
Agri-food
- Research**
High Tech
- Research**
Horticulture and Propagation
- Research**
Life Sciences and Health
- Research**
Creative Industry
- Research**
Chemicals
- Research**
Water Sector



The screenshot shows the top section of the academictransfer.nl website. At the top left is the 'nuffic neso' logo. To its right are navigation links for 'Jobs', 'Career advice', and 'Post a job'. Below these is a yellow banner with a silhouette of a person jumping and the text '> ACADEMICTRANSFER'. The main heading is 'Your next step in excellence'. Below this are two buttons: 'Find jobs' (highlighted) and 'CV Match beta'. There are two radio buttons for 'Type of vacancies': 'Scientific' (selected) and 'Non-scientific'. Below these are three search filters: 'Keywords' (text input with placeholder 'keyword, location, employer'), 'Job type' (dropdown menu), and 'Scientific field' (dropdown menu). On the right side, a yellow box displays '606 Jobs' and an '> E-mail alert' button. Two red arrows originate from the 'Job type' and 'Scientific field' dropdowns and point towards the job type list on the right.

Published ▾ Deadline

SPOTLIGHT

BCF Career Event

Boost your career in Life Sciences! Support! Visit BCF Career Event

yesterday

15 May

- PhD
- Postdoc
- Professor, Associate professor, Assistant professor & Lecturer
- Research, Development, Innovation
- Non-scientific

- Agriculture
- Natural Sciences
- Engineering
- Health
- Economics
- Law
- Behaviour and Society
- Language and Culture
- Food

Technology Lead "optimized data handling" (m/f)

The Netherlands eScience Center is looking for a Technology Lead "optimized data handling" (m/f)

netherlands

eScience center

PhD RECRUITMENT

PhD Workshop China Dutch Virtual Event
20-22 November 2020



Nuffic neso



+62 21 5085 8787



+62 811 9408 146



info@nesoindonesia.or.id



Nuffic Neso Indonesia



@studidibelanda



@studidibelanda



www.nesoindonesia.or.id

