

The structure of Brazilian Universities

Nicolas Maillard

Universidade Federal do Rio Grande do Sul

Some input on Brazil

- 5th largest country in the world (after Russia, Canada, China & USA)
- +- 50% of L.America
- ≈ 215 M. people
- Only Portuguese speaking country in LA



How H. Ed. Is defined in Brazil

- Every level of Education depends on a different stakeholder:
 - Primary Ed.: City,
 - Secondary Ed.: State,
 - Higher Ed.: Federal government (MEC) and/or State
- Higher Ed. Institutions have one of three statuses:
 - Federal, State, Private (profit or non-profit)
- The degrees and the HEIs are accredited by the Ministry of Education (MEC)
 - <http://portal.mec.gov.br/index.php>

Some figures

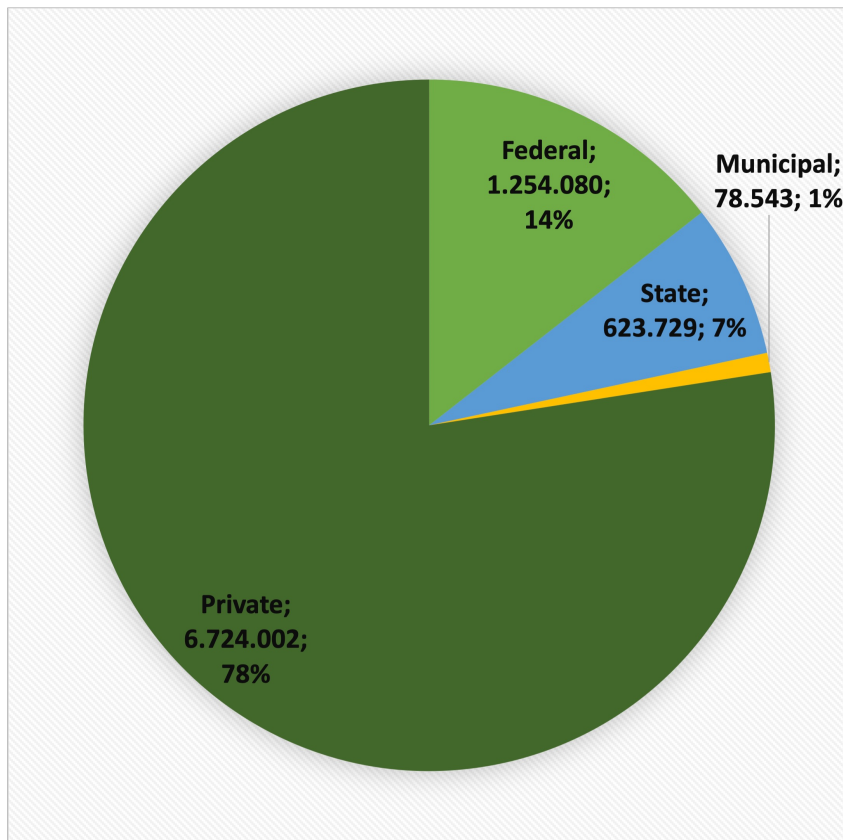
Unidade da Federação / Categoria Administrativa	Total Geral						Universidades		
	Total	Capital	Interior	Total	Capital	Interior			
	Brasil	2.457	856	1.601	203	86	117		
Pública	304	98	206	112	48	64			
Federal	118	67	51	68	31	37			
Estadual	129	31	98	39	17	22			
Municipal	57	-	57	5	-	5			
Privada	2.153	758	1.395	91	38	53			

Instituições							
Centros Universitários			Faculdades			IF e CEFET	
Total	Capital	Interior	Total	Capital	Interior	Total	Capital
322	127	195	1.892	613	1.279	40	30
12	1	11	140	19	121	40	30
1	-	1	9	6	3	40	30
2	1	1	88	13	75	-	-
9	-	9	43	-	43	-	-
310	126	184	1.752	594	1.158	-	-
21	15	6	139	67	72	7	7
-	-	-	1	-	1	7	7
-	-	-	-	-	-	7	7
-	-	-	-	-	-	-	-
-	-	-	1	-	1	-	-
21	15	6	138	67	71	-	-

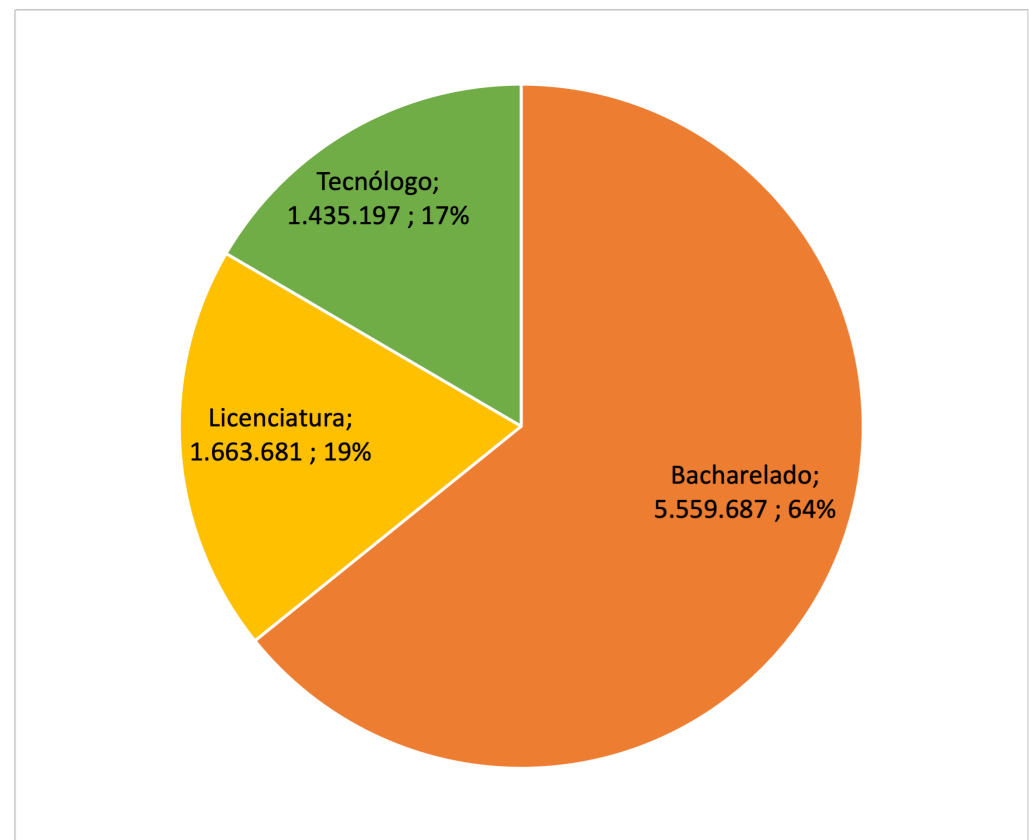
Undergrad students (2020)

8.680.354 undergrad students in Brazil

Private X Public



Degree

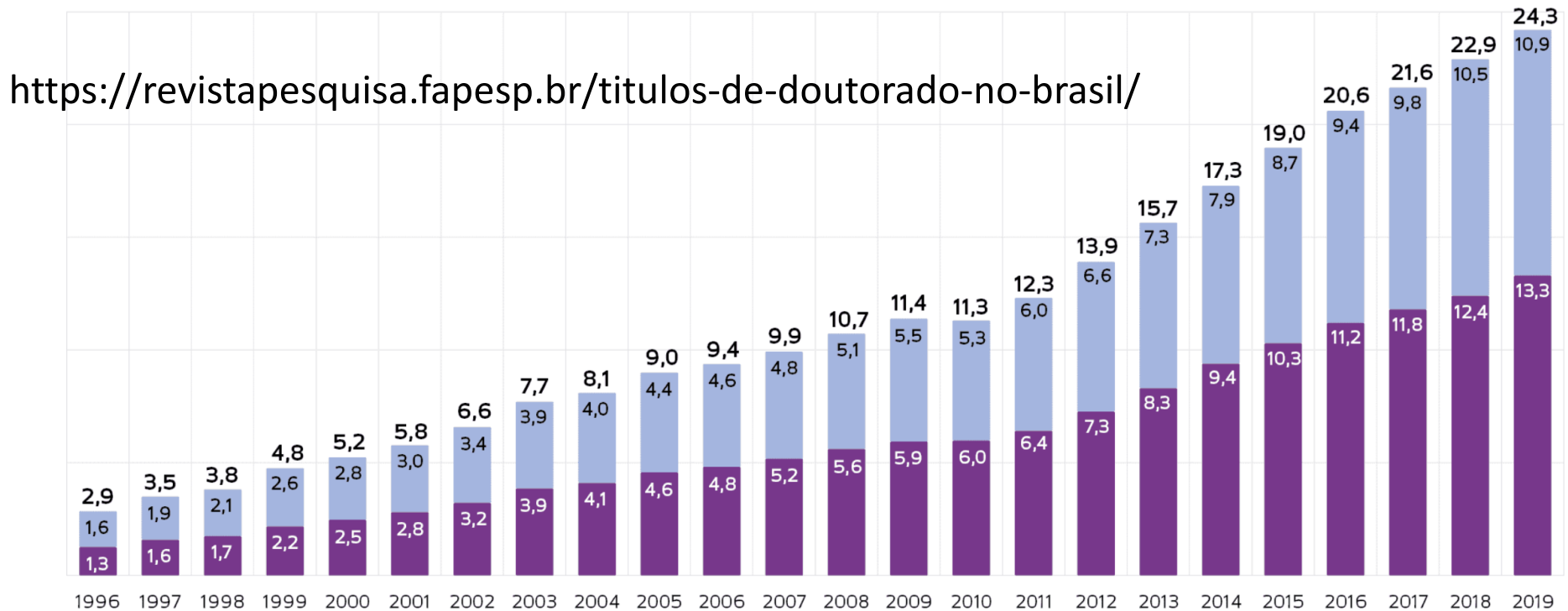


Graduate studies

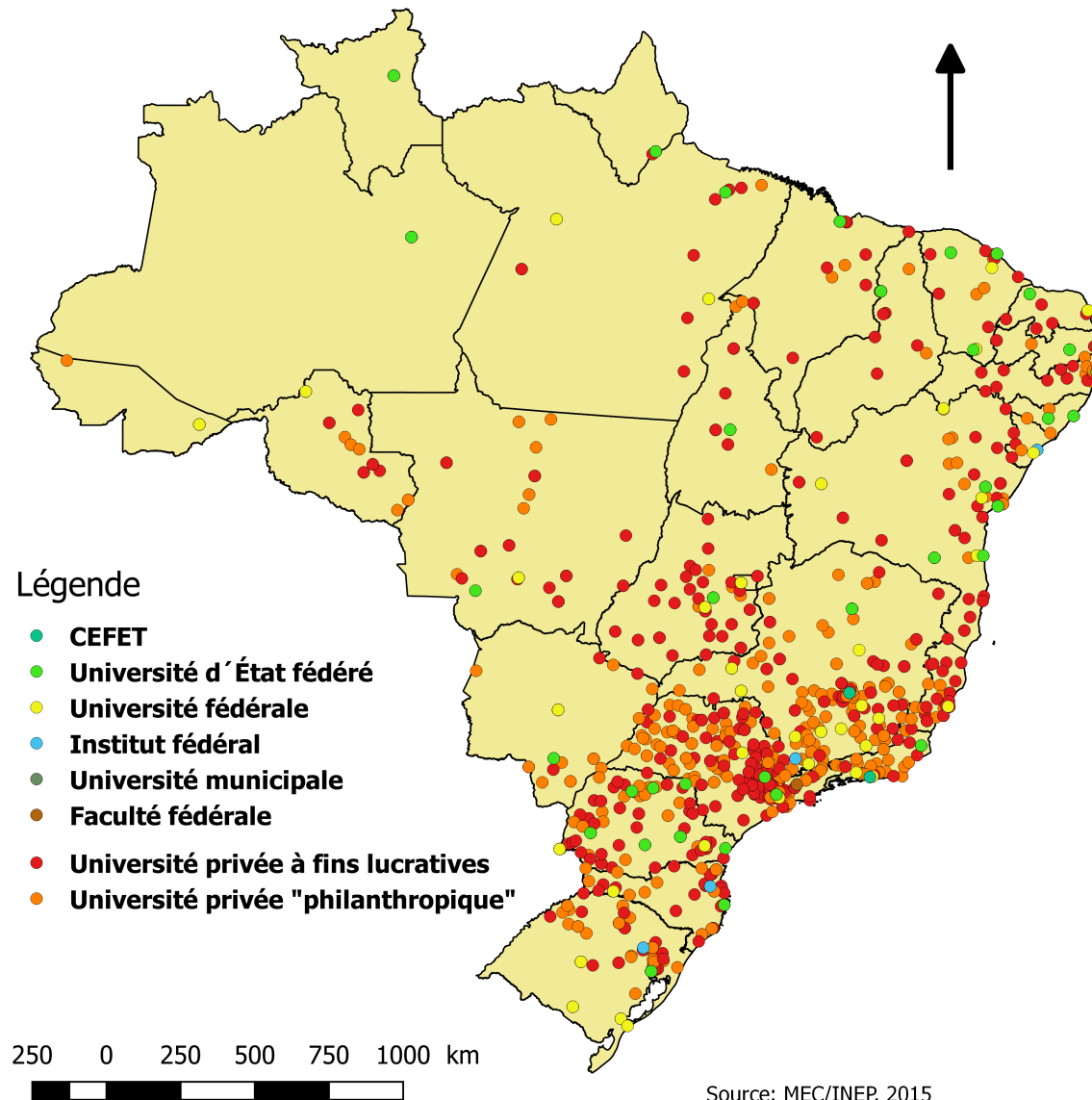
- 7.000+ Graduate programs,
- 24.000 Ph.D. / year,

TÍTULOS DE DOUTORADO POR SEXO DO TITULADO (EM MILHARES) — BRASIL 1996-2019*

■ Feminino ■ Masculino



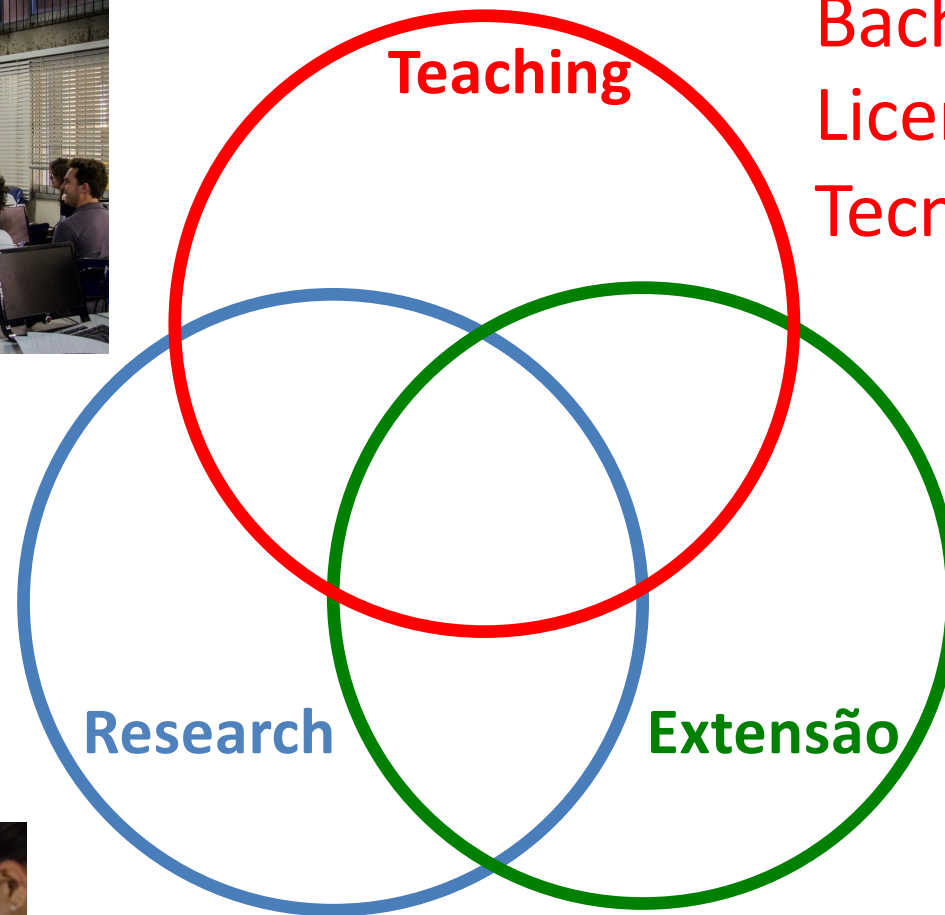
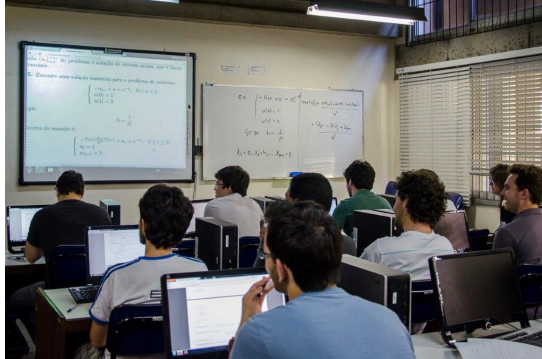
Where are the Brazilian HEIs?



Source: MEC/INEP, 2015

© VN -2016

The three missions

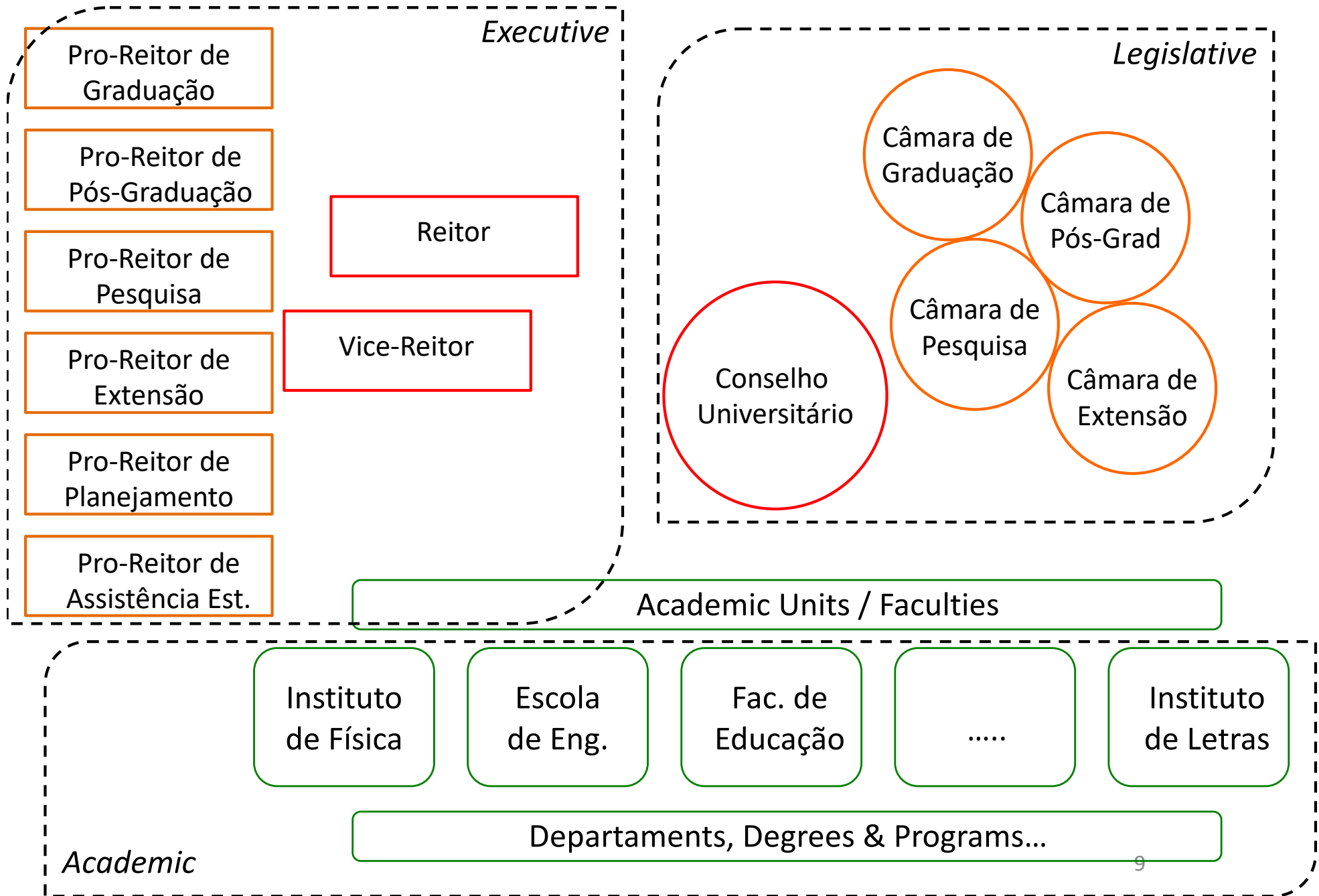


Bacharelado,
Licenciatura,
Tecnólogo

Social,
Cultural



Structure of an HEI



Teaching - Higher Ed. in Brazil vs. 3+2+3





Research

- Research Funding
 - Calls from CPNq, FAP*, FINEP, CAPES...
- Student Advising & Graduate teaching



Extensão / Outreach / 3rd mission...

- Integrated to the undergrad curriculum
- Social, Cultural, Sports, Health...

Some links

- GeoCAPES: geocapes.capes.gov.br/geocapes2/
- Lattes: lattes.cnpq.br
- CAPES: www.capes.gov.br
- MEC: www.mec.gov.br
- CNPq: cnpq.br
- INEP: portal.inep.gov.br/superior-censosuperior-sinopse
- ANDIFES: www.andifes.org.br
- FAUBAI: faubai.org.br/pt-br/

The structure of Brazilian Universities

Nicolas Maillard

Universidade Federal do Rio Grande do Sul