



Marie Skłodowska-Curie Actions (MSCA)



Marie Skłodowska-Curie Actions

The three pillars of H2020

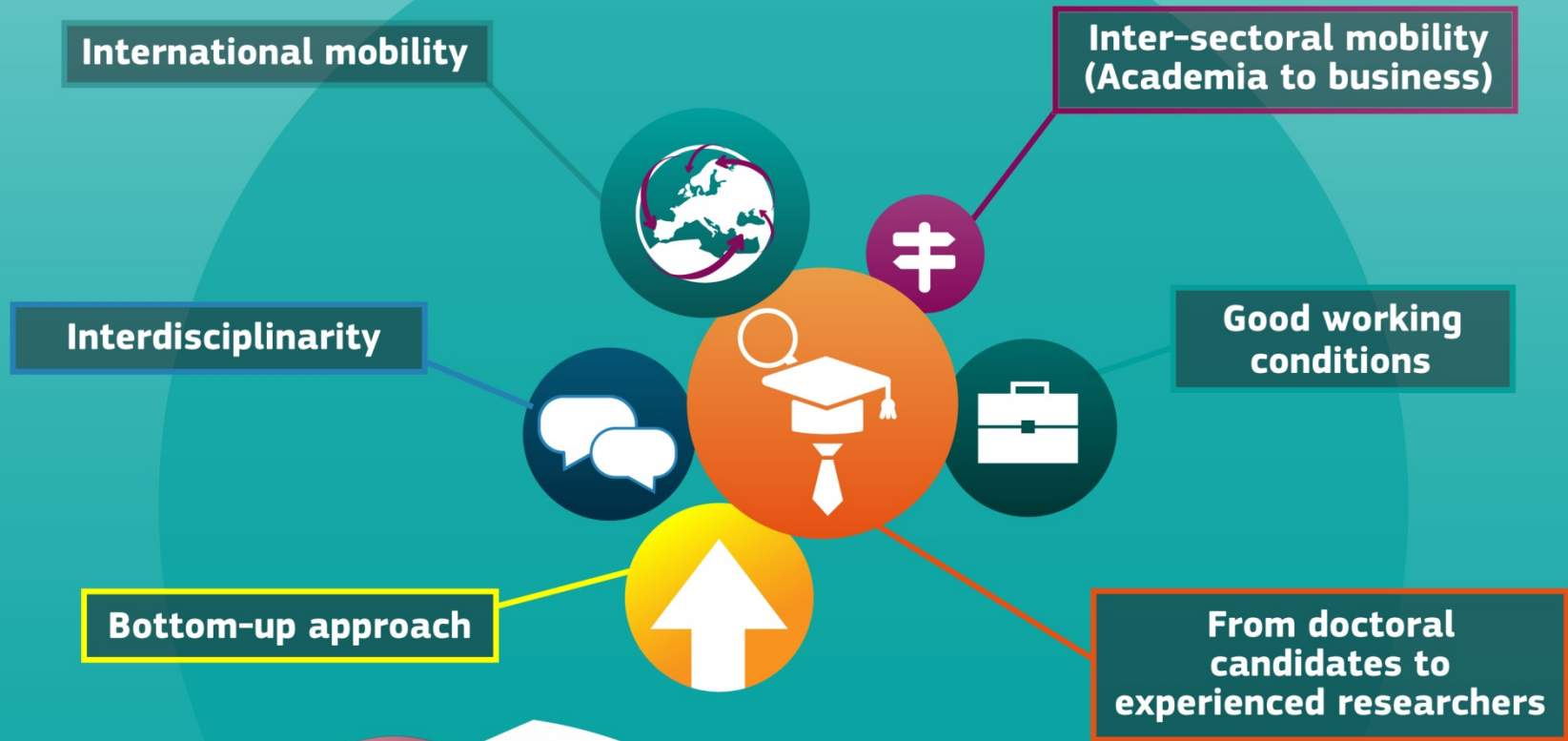


MSCA objective:

ensure optimum development and dynamic use of Europe's intellectual capital in order to generate new skills, knowledge and innovation

MSCA key features

Research training and career development



Marie Skłodowska-Curie Actions



ITN Innovative Training Networks

What does it offer?

High-quality research training delivered through international and interdisciplinary networks, industrial doctorates or joint doctorates

Who applies?

International networks of research organisations from the academic and non-academic sectors

Who is funded?

Researchers at doctoral level (less than four years of full-time research experience and no doctoral degree)



IF Individual Fellowships

What does it offer?

Opportunities to work on personal research projects by moving between countries and possibly sectors to acquire new skills

Who applies?

Individual researchers together with the host organisation

Who is funded?

Postdoctoral researchers



RISE Research and Innovation Staff Exchange

What does it offer?

The exchange of staff members involved in research and innovation to develop sustainable collaborative projects and the transfer of knowledge

Who applies?

International networks of research organisations from the academic and non-academic sectors

Who is funded?

Researchers, technical, administrative and managerial staff of any nationality and at all career levels



COFUND Co-Funding of Regional, National and International Programmes

What does it offer?

Regional, national or international programmes to foster excellence in researchers' training, mobility and career development

Who applies?

Organisations funding or managing doctoral programmes or fellowship programmes

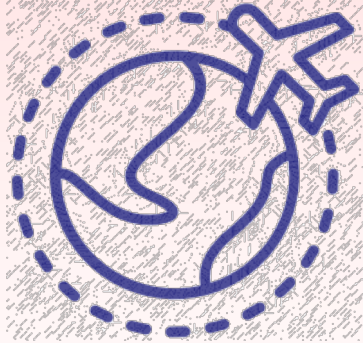
Who is funded?

Researchers at doctoral and postdoctoral level

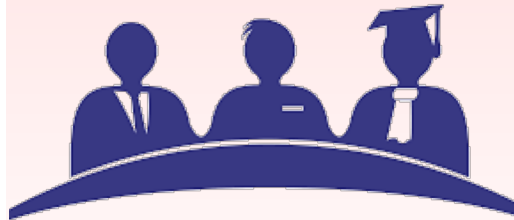


RESEARCH AND INNOVATION STAFF EXCHANGE - RISE

RISE Crosses Borders



Countries

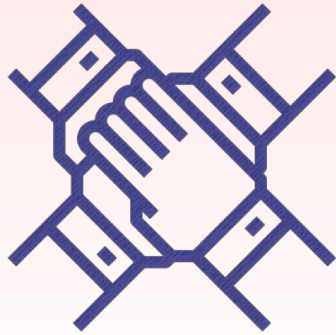


Sectors



Disciplines

RISE Objectives



**Collaborations
international &
intersectoral**



**Research &
Innovation Staff
Exchanges**



**Transfer of
Knowledge**

RISE Consortium Participants

Beneficiary	Third Country Partner Organisation
In Member State (MS) or H2020 Associated Country (AC)	In Third Country (TC)
Sign Grant	Do NOT sign Grant
Claim costs*	Do NOT Claim costs
Overall implementation	Letter of Commitment required for project implementation

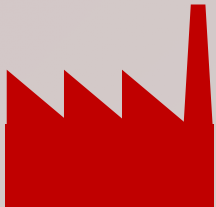
*also for TC with funding

Who applies ?



Academic sector

- ✓ public /private higher education establishments awarding academic degrees
- ✓ public /private non-profit research organisations whose primary mission is to pursue research
- ✓ international European interest organisations (e.g. CERN, EMBL)



Non-academic sector

- ✓ any entity not included in the academic sector:
- ✓ e.g. large companies, SMEs, NGOs, museums, hospitals
- ✓ international organisations (e.g. UN, WHO)

RISE in practice



Who

Minimum 3 independent organisations from 3 different countries; 2 of which MS/AC

What

Joint R&I activities

How

Staff exchanges (1-12 months)

How long

Up to 4 years

How much

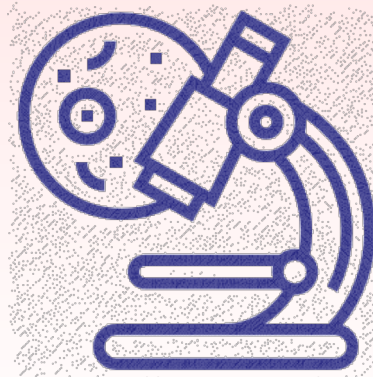
Up to 2.48 million Euro (unit cost)



Which staff can be exchanged?



Staff under national law

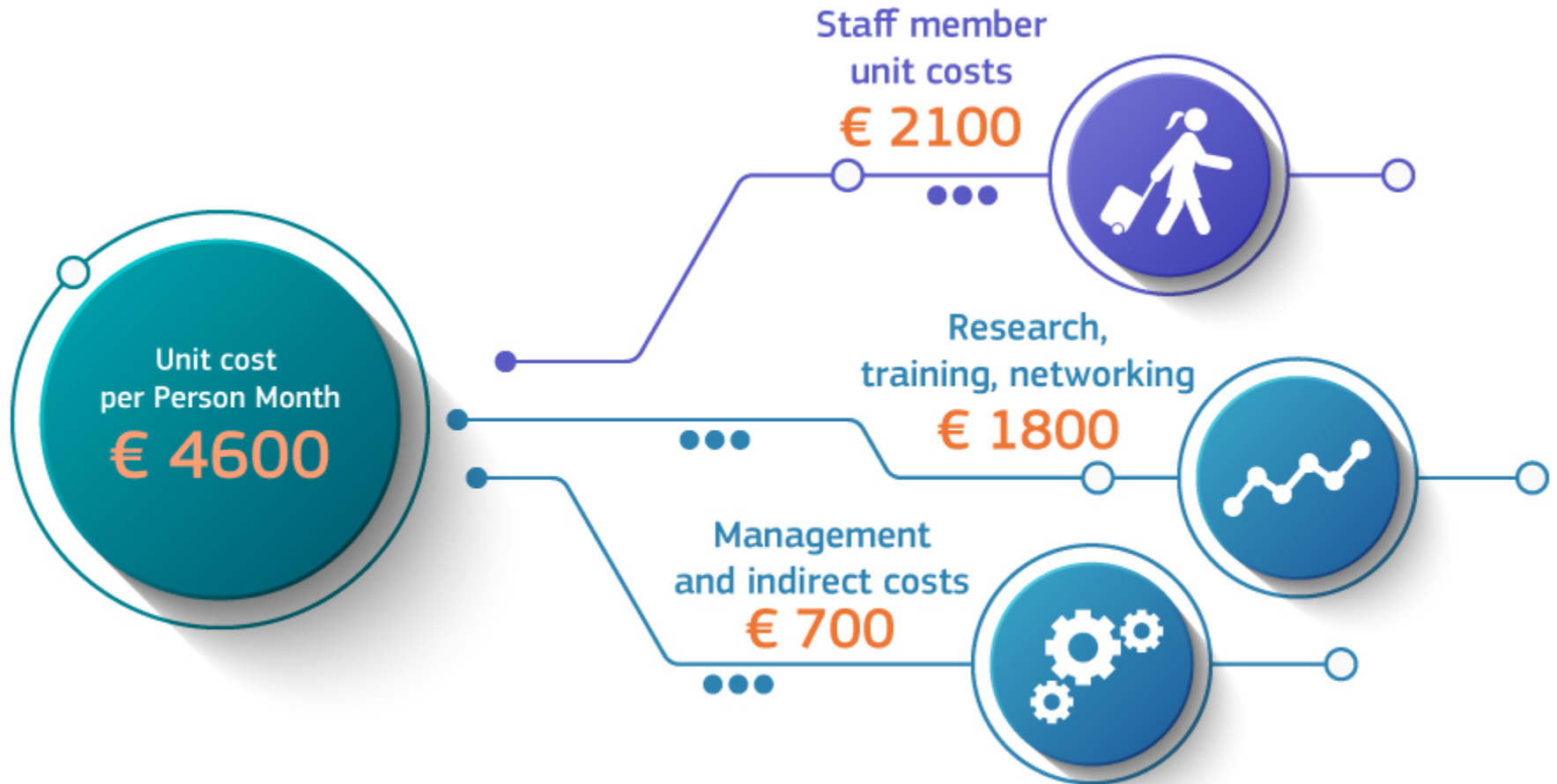


Have research experience



Active in R&I in the last 1 month

What does RISE fund?



STATISTICS: Canada & MSCA RISE in H2020 (2014-2018)

Year	Participation	Retained Proposals	Success Rate
2014	5	3	60%
2015	26	14	53.8%
2016	24	11	45.8%
2017	17	5	29.4%
2018	31	8	25.8%

INDIVIDUAL FELLOWSHIPS- IF

What are Individual Fellowships?



What are IFs?

- **Individual trans-national fellowships to the best and most promising experienced* researchers**
(* with PhD or 4-year full-time equivalent research experience)

European Fellowships

Standard (ST)

Career Restart Panel (CAR)

Re-integration Panel (RI)

Society & Enterprise Panel (SE)

Global Fellowships

- ✓ **Secondments of 3 – 6 months in Europe (MS or AC), for greater impact**
- ✓ **Specific eligibility criteria**
- ✓ **Career development with an appropriate inter-sectoral dimension**



An Experienced Researcher may submit only one proposal to this call for proposals.



European Fellowships



For fellows coming to or moving within Europe (duration 12-24 months)



Global Fellowships

For fellows from Europe going to Third countries (12-24 months) returning to Europe (12 months)



Total duration 24-36 months



MSCA: Mobility to/from...

28 EU Member States (MS)

Austria, Belgium, Bulgaria,
Croatia, Cyprus, Czech Republic,
Denmark, Estonia, Germany,
Greece, Finland, France,
Hungary, Ireland, Italy, Latvia,
Lithuania, Luxemburg, Malta,
Netherlands, Poland, Portugal,
Romania, Slovakia, Slovenia,
Spain, Sweden, United Kingdom

16 Associated Countries (AC) to MSCA

Albania, Bosnia & Herzegovina,
Faroe Islands, FYROM, Iceland,
Israel, Moldova, Montenegro,
Norway, Serbia, Switzerland,
Tunisia, Turkey, Ukraine,
Georgia, Armenia

Which sectors?



Academic

Public or private Higher Education establishment awarding academic degrees

Public or private non-profit research organisations

International European interest organisations

- Universities
- Non-profit research institutes
- IEIOs

Non-academic

Broad definition:

Any socio-economic actor not included in the academic sector definition

- Industry
- SMEs
- Other socio-economic actors

EU Validation Services ultimately determine the sector of each participating organisation

IF– Financial Aspects

Marie Skłodowska-Curie Action	Staff member unit cost <i>person/month</i> Top-up allowance	Institutional unit cost <i>person/month</i>	
		Research, training and networking costs	Management and indirect costs
IF	4 880 € (living allowance) * 600 € (mobility allowance) 500 € (family allowance)	800 €	650 €

*adjusted through the application of a country correction coefficient

INDIVIDUAL FELLOWSHIPS		EUROPEAN				GLOBAL
		ST	CAR	RI	SE	GF
EXPERIENCED RESEARCHERS	Nationality	ANY	ANY	MS, AC or long-term residents	ANY	MS, AC or long-term residents
	Mobility	From ANY country to MS or AC	From ANY country to MS or AC	From TC directly to MS or AC (location of host institution)	From ANY country to MS or AC	From ANY country to TC then to MS/AC
		<= 12 months in the last 3 years	<= 36 months in the last 5 years	<= 36 months in the last 5 years	<= 36 months in the last 5 years	<= 12 months in the last 3 years
	Career break in research	-	at least 12 months within 18 months prior to call deadline	-	-	-
PARTICIPANTS	Beneficiary	MS or AC	MS or AC	MS or AC	MS or AC <u>Non-academic only</u>	MS or AC
	Entity with capital or legal link	MS or AC	MS or AC	MS or AC	MS or AC <u>Non-academic only</u>	MS or AC
	Partner Organisation	MS or AC (optional secondment)	MS or AC (optional secondment)	MS or AC (optional secondment)	MS or AC (optional secondment, both Academic and Non-Academic)	<u>outgoing phase (mandatory) TC</u>
MS or AC (optional secondment)						
DURATION (months)		12 to 24	12 to 36	12 to 24	12 to 24	24 to 36 (12 to 24 + 12)
SCIENTIFIC AREAS		8	8	8	8	8
NUMBER OF RANKING LISTS		8	1	1	1	8
BUDGET (total € 218.5 million)		€220 million			€8 million	€ 45million

Evaluation & Award Criteria



Excellence	Impact	Quality and Efficiency of Implementation
Quality and credibility of the research/innovation project; level of novelty, appropriate consideration of inter/multidisciplinary and gender aspects	Enhancing the future career prospects of the researcher after the fellowship	Coherence and effectiveness of the work plan, including appropriateness of the allocation of tasks and resources
Quality and appropriateness of the training and of the two way transfer of knowledge between the researcher and the host	Quality of the proposed measures to exploit and disseminate the project results	Appropriateness of the management structure and procedures, including risk management
Quality of the supervision and of the integration in the team/institution	Quality of the proposed measures to communicate the project activities to different target audiences	Appropriateness of the institutional environment (infrastructure)
Potential of the researcher to reach or re-enforce professional maturity/independence during the fellowship		

Each criterion will be scored out of 5. Decimal points will be given.

Evaluation & Award Criteria



A weighed total score of the scores of the three individual criteria will be calculated and converted into a percentage of the maximum score.

Excellence	Impact	Quality and Efficiency of Implementation
Weighing		
50%	30%	20%
Priority in Case of ex-aequo		
1	2	3

An overall threshold of 70% will be applied to the total weighed score.
Proposals under the threshold will be rejected.

Prioritization in case of ex-aequo

- if necessary based on other appropriate characteristics that are
 - * decided by the panel
 - * related to the contribution of the proposal to the European Research Area and/or general objectives mentioned in the Work Programme
- depends on available budget and call conditions

Proposal Part A (Submission Forms)



Proposals must be submitted electronically using the Participant Portal.

Part A: administrative details

Section 1 – General Information

Section 2 – Administrative data of participating organisations (supervisor(s), researcher)

Section 3 – Budget: information on the duration (person-months) to calculate the total requested EU contribution.

Section 4 – Ethics: identifies any ethical aspects of the proposed work. Even if there are no issues, you must simply confirm that none of the ethical issues apply to the proposal.

Section 5 – Call specific questions request declarations related to eligibility and personal data, together with questions on any secondment in Europe.

Proposal Part B



The "core" of the proposal – the structure below is mandatory
!!There is no cover page or table of contents anymore!!

DOCUMENT 1 (10-PAGE LIMIT APPLIED)

START PAGE COUNT

1. EXCELLENCE
2. IMPACT
3. IMPLEMENTATION

MAX 10 pages

STOP PAGE COUNT

DOCUMENT 2 (NO OVERALL PAGE LIMIT APPLIED)

4. CV OF THE EXPERIENCED RESEARCHER
5. CAPACITIES OF THE PARTICIPATING ORGANISATIONS
6. ETHICAL ASPECTS
7. LETTERS OF COMMITMENT OF PARTNER ORGANISATIONS
(GF only)

New as of 2018

- **Part-time work option for Experienced Researcher – at least 50% commitment to the project**
- **Career Restart Panel (CAR) and Reintegration (RI) strengthened**
- **Global Fellowships – possibility to spend time at the European beneficiary before the outgoing mobility foreseen**
- **Teaching highlighted**
- **Dedicated Widening Fellowships for IF**
- **Society & Enterprise panel – pilot continued in 2018**



Widening Fellowships

What?

Specific support to researchers to undertake their fellowship in a Widening country.
This will help spread excellence and widen participation within Horizon 2020.

How will it be implemented?

Through the Spreading Excellence and Widening Participation part of the Horizon 2020 Work Programme in line with the high-quality standards and benefits of the MSCA Individual Fellowships.

Who can benefit from the widening fellowship?

Researchers applying for an MSCA European Fellowship in Widening countries, be it a Standard, Society & Enterprise, Career Restart or Reintegration Fellowship. Proposals above quality threshold but not retained for funding through the MSCA Individual Fellowship call with a host institution in a Widening country will be automatically reassigned to the Widening Fellowships call (unless the applicants explicitly opted-out).

Widening Fellowships

Which countries are concerned?



Member States: Bulgaria, Croatia, Cyprus, Czech Republic, Estonia, Hungary, Latvia, Lithuania, Luxembourg, Malta, Poland, Portugal, Romania, Slovakia and Slovenia.

Associated Countries: Albania, Armenia, Bosnia and Herzegovina, Faroe Islands, Former Yugoslav Republic of Macedonia, Georgia, Moldova, Montenegro, Serbia, Tunisia, Turkey and Ukraine.

Budget



2018: EUR 5 million
2019: EUR 6 million
2020: EUR 7 million

MSCA Calls 2018



ITN

Innovative Training Networks

What does it offer?

High-quality research training delivered through interdisciplinary networks, industrial doctorates or joint doctorates.

Who applies?

International networks of research organisations from the academic and non-academic sectors

Who is funded?

Researchers at doctoral level (less than 4 years of full-time research experience and no doctoral degree)

Call details:

Opens: 13 September 2018
Closes: **15 January 2019**
at 17:00:00 Brussels time
Budget: 470M€



IF

Individual Fellowships

What does it offer?

Opportunities to work on personal research projects by moving between countries and possible sectors to acquire new skills.

Who applies?

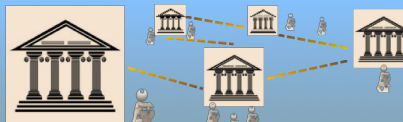
Individual researchers together with the host organisations

Who is funded?

Postdoctoral researchers

Call details:

Opens: 12 April 2018
Closes: 12 September 2018
at 17:00:00 Brussels time
Budget: 273M€



RISE

Research & Innovation Staff Exchange

What does it offer?

The exchanges of staff members involved in research and innovation to develop sustainable collaborative projects and the transfer of knowledge.

Who applies?

International networks of research organisations from the academic and non-academic sectors

Who is funded?

Researchers, technical administrative and managerial staff of any nationality and at all career levels

Call details:

Opens: 4 December 2018
Closes: **2 April 2019**
at 17:00:00 Brussels time
Budget: 80M€



COFUND

Co-Funding of Regional, National & International Programmes

What does it offer?

Regional national or international programmes to foster excellence in training mobility and career development of researchers

Who applies?

Organisations funding or managing doctoral or fellowships programmes

Who is funded?

Researchers at doctoral and postdoctoral level

Call details:

Opens: 4 April 2019
Closes: **26 September 2019**
at 17:00:00 Brussels time
Budget: 90M€



IF 2018 Call: first results

A total of **9,830** proposals were submitted in response to this call.

The number of proposals for each type of action:

- Standard European Fellowships (MSCA-IF-EF-ST): **7,565** proposals
- Reintegration Panel (MSCA-IF-EF-RI): **610** proposals
- Career Restart Panel (MSCA-IF-EF-CAR): **471** proposals
- Society & Enterprise Panel (MSCA-IF-EF-SE): **327** proposals
- Global Fellowships (MSCA-IF-GF): 857 proposals



STATISTICS: Canada & MSCA IF in H2020 (2014-2017)

Researchers with Canadian nationality

- European IF = 109
- Global IF = 6

European researchers going to Canada

- Global IF = 55

Canada is #2 destination after the US for Global IF

More information on MSCA

Marie Skłodowska-Curie website

<http://ec.europa.eu/msca>

What's new? MSCA work programme 2018

http://ec.europa.eu/research/mariecurieactions/library_en

Horizon2020

<http://ec.europa.eu/programmes/horizon2020>

Funding & tender opportunities (calls, online application, documents, FAQ, NCPs)

<https://ec.europa.eu/info/funding-tenders/opportunities/portal/>

Euraxess (jobs, rights, services, etc.)

<http://ec.europa.eu/euraxess/>

European Charter for Researchers

<http://ec.europa.eu/euraxess/index.cfm/rights/whatIsAResearcher>

How to find partners

<https://cordis.europa.eu/partners/web/guest>

MSCA on Facebook

<https://www.facebook.com/Marie.Curie.Actions>

MSCA on Twitter

@MSCactions



Questions?

H2020 Help desk

<http://ec.europa.eu/research/index.cfm?pg=enquiries>

Frequently Asked Questions

<http://ec.europa.eu/research/participants/portal/desktop/en/support/faq.html>

National Contact Points

<https://ec.europa.eu/info/funding-tenders/opportunities/portal/screen/support/ncp>

Marie Curie Alumni Association

<https://www.mariecuriealumni.eu/>

<https://www.net4mobilityplus.eu/>

Net4Mbility



Thank you!

Viktoria Bodnarova

EURAXESS North America

northamerica@euraxess.net

<http://northamerica.euraxess.org>



EURAXESS North America



@euraxess_na



Join our North America [Community](#)



EURAXESS Links – Internationally
Mobile Researchers