

Youngest Institution of Eminence

Shiv Nadar Institution of Eminence



HORIZON EUROPE MSCA POSTDOCTORAL FELLOWSHIP CALL 2024
June 26, 2024

4

Schools

50

Programs
Offered

5

Research
Centers

3400

Students

~250+

Faculty
Members

286

Acre
Campus

155+

Laboratories and
Studios

24

Departments

50+

Student Clubs
and Societies



COMPREHENSIVE



MULTI DISCIPLINARY



RESEARCH-FOCUSED



STUDENT CENTRIC

Research Snapshot

2011 - Year of establishment



- Doctoral students: 400+
- Postdoctoral students: 21 (initiated the program in 2022)
- INR 19 Billion Investment to date
- INR 2 Billion Internal Research Investment
- INR 640 Million Extramural Research Funding
- 160 Extramural Research Projects
- 34 Patents Filed
- 22 Patents granted
- 3100 Journal Articles (SCOPUS indexed)



Research Centres

- Centre for Integrative and Translational Research
- Centre for Excellence in Epigenetics
- Centre for Advanced Materials
- Centre of Excellence in Association with Dassault Systems
- Centre of Excellence for Himalayan Studies



School of Natural Sciences

Website: <https://www.snu.edu.in/schools/school-of-natural-sciences/>

Name	Designation	Department	Research Interests
Parthapratim Munshi	Professor	Chemistry	Quantum Crystallography, Structure-property Relationships of Multifunctional (Optical, Ferroelectric, unusual thermal expansion) Organic Materials, Polymorphism, Charge Density Analysis, Protein-Ligand Interactions Energies, Hydrogen Bonds
Subhabrata Sen	Professor	Chemistry	Synthetic organic Chemistry
Bimlesh Lochab	Professor & Head	Chemistry	Synthetic organic (green) chemistry: Dendritic architectures and polymers for variety of applications, Nanochemistry: Carbon nanotubes, fullerene, nanodiamonds and Graphene functionalization and their utility
Sanjeev Galande	Dean, School of Natural Sciences (SoNS)	Life Sciences	Gene expression, Regeneration Biology, Cancer, Ageing, and Evolution
Prasun Kumar Roy	Distinguished Professor	Life Sciences	Neuroscience, Cognitive Science, Bio-Medical Engineering, Brain/Mind Health protection.
Colin Christopher Jamora	Professor and Head	Life Sciences	Understanding the intricate intercellular communication within organs during tissue repair after an injury by using wound healing in mouse skin as a model system



School of Natural Sciences

Website: <https://www.snu.edu.in/schools/school-of-natural-sciences/>

Name	Designation	Department	Research Interests
Amber Habib	Professor	Mathematics	Representation Theory, Mathematical Finance, Mathematics Education
Sanjeev Agrawal	Professor	Mathematics	Functional Analysis, Operator Theory, Error Correcting Codes, Encryption, Mathematics Education
Sudepto Bhattacharya	Professor and Head	Mathematics	Complexity, Evolutionary game theory, Game theory, Network theory, Mathematical ecology, Mathematical modelling in archaeology, Environmental sciences and Social Sciences
Taduri Srinivasa Siva Rama Krishna Rao	Distinguished Professor	Mathematics	Functional Analysis, Operator Theory and Geometry of Banach spaces.
Indranil Biswas	Senior Professor	Mathematics	Algebraic Geometry, Analytic Geometry, Differential Geometry, Topology, and Mathematical Physics.
Amber Habib	Professor	Mathematics	Representation Theory, Mathematical Finance, Mathematics Education



School of Natural Sciences

Website: <https://www.snu.edu.in/schools/school-of-natural-sciences/>

Name	Designation	Department	Research Interests
Aloke Kanjilal	Professor	Physics	Experimental condensed matter physics (Surface physics, Thin films, Ion beam physics)
Susanta Sinha Roy	Professor and Head	Physics	Experimental condensed matter physics (Carbon materials, Microfluidics)
Priya Johari	Professor	Physics	Computational condensed matter physics (Two-dimensional materials, organic molecules, and electrode materials for Li-ion)
Sujit Kashinath Tandel	Senior Professor	Physics	Nuclear physics, study of superheavy elements, metastable states in atomic nuclei, and nuclear shapes.
Aloke Kanjilal	Professor	Physics	Experimental condensed matter physics (Surface physics, Thin films, Ion beam physics)
Susanta Sinha Roy	Professor and Head	Physics	Experimental condensed matter physics (Carbon materials, Microfluidics)



School of Engineering

Website: <https://www.snu.edu.in/schools/school-of-engineering/>

Name	Designation	Department	Research Interests
Dinkar Prasad	Professor and Head	Electrical Engineering	Power-Electronic converters for variety of Industrial Applications (including wind and solar power)
Suneet Tuli	Dean, Research & Partnerships, Dean-SOE; Mentor, SDC; Professor	Electrical Engineering	Thermal-acoustic-electrical-optical interaction, non-destructive characterization – active and passive thermography, and surface acoustic wave devices and electronic systems
Vijay Chakka	Professor	Electrical Engineering	Digital Signal Processing, Statistical Signal Processing, Detection and Estimation theory, Digital and wireless communication, MIMO and OFDM communication
Vinod Sharma	Professor	Electrical Engineering	Communication Networks, Wireless Communications and Information Theory
Shantanu Mitra	Professor	Mechanical Engineering	Thermo-fluids and energy systems, Bioinspiration and Biomimetic, Robotics
Harpreet Singh	Professor and Head	Mechanical Engineering	Structure-Property Correlation in Metallic Materials Surface Engineering; Friction Stir Welding and Processing Bulk Metallic Glasses (BMGs); High Entropy Alloys (HEAs); Biomaterials Material Degradation Behavior; Corrosion; Tribology Electrochemistry; Energy Storage; and Supercapacitors



Research Labs: <https://snu.edu.in/research-labs/>

Research Excellence Initiatives: <https://snu.edu.in/research/research-excellence-initiatives/>

Research Partnerships: <https://www.snu.edu.in/partnerships/>

International Academic Research Partners:

- 360 info
- CAEN SpA
- Center for South Asian Studies, University of Michigan (UM)
- CNCSI, Durham
- Drugs for Neglected Diseases Initiative DNDi, Geneva
- École Normale Supérieure
- Gdansk University of Technology
- NSERC Alliance International
- Penn Museum, University Of Pennsylvania
- University of Massachusetts Lowell
- University of Pompeu Fabra
- University of Vienna, Faculty of Social Sciences

Resources and Facilities



Horse Riding



Golf Course



Departmental Store



Library



Wellness Centre



Tuck Shops



Post Office



Dining Halls

Resources and Facilities



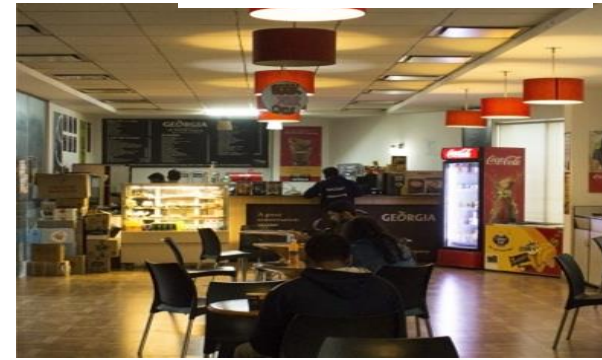
Indoor Sports Complex



Student Activity Centre



Hostel Blocks



Cafe



Shuttle Services



Shopping Arcade



Gym



Laundry & Salon

LIFE AT SHIV NADAR UNIVERSITY





Contact

Dr. Karthik Krishnan, Associate Dean, Research | karthik.krishnan@snu.edu.in

Ms. Harshita Tripathi, Senior Manager, Office of Research & Partnerships | harshita.tripathi@snu.edu.in

Thank You

Website: <https://www.snu.edu.in/home/>

Email ID: partnerships@snu.edu.in

Email ID: dean.research@snu.edu.in