



MSCA PF: introduction and how to apply

Lili Kankaya,
Senior Executive,
MSCA NCP Malta

MSCA

Agenda:

- MSCA and MSCA PF
- How to apply
- How to find a host
- Common mistakes
- PF2MT



Where to find MSCA in Horizon Europe

[Link for Horizon Europe](#)

Horizon Europe



- Horizon Europe budget: **95.5 billion €** → MSCA budget: **6.6 billion €**
- **Excellent Science** (Pillar 1): reinforcing and extending the excellence of the EU's science base

Pillar I: Excellent Science

Reinforcing and extending the excellence of the Union's science base

European Research Council

Frontier research by the best researchers and their teams

€16 billion

Marie Skłodowska Curie Actions

Equipping researchers with new knowledge and skills through mobility and training

€6.6 billion

Research Infrastructures

Integrated and inter-connected world-class research infrastructures

€2.4 billion

[Link for MSCA](#)

The MSCA have **5** main actions

Doctoral Networks

implement doctoral programmes (including joint doctorates and industrial doctorates) **by international partnerships** of organisations from different sectors. They train highly-skilled doctoral candidates, stimulate their creativity, enhance their innovation capacities and boost their employability in the long-term.

Postdoctoral Fellowships

support researchers' careers and foster excellence in research and innovation. Researchers holding a PhD can carry out their research activities, acquire new skills and develop their careers abroad, whilst developing competences in non-academic sectors and working within interdisciplinary teams.

Staff Exchanges

encourage short-term international and inter-sectoral exchanges of research and innovation staff through sustainable, collaborative projects in Europe and beyond. By doing so, they enhance knowledge and skills transfer and increase organisations' research and innovation capacities.

MSCA and Citizens

brings research and researchers closer to children, families and the public at large through the European Researchers' Night - the annual research communication and promotion event taking place at the end of September across EU Member States and Horizon Europe Associated Countries.

COFUND

co-finances regional, national and international doctoral and postdoctoral programmes for researchers' training and career development. The COFUND action spreads MSCA's best practices by setting high standards and excellent working conditions, and boosts training and international, interdisciplinary and inter-sectoral mobility.

[Link for MSCA Postdoctoral Fellowships 2024](#)

HORIZON EUROPE

MSCA Postdoctoral Fellowships



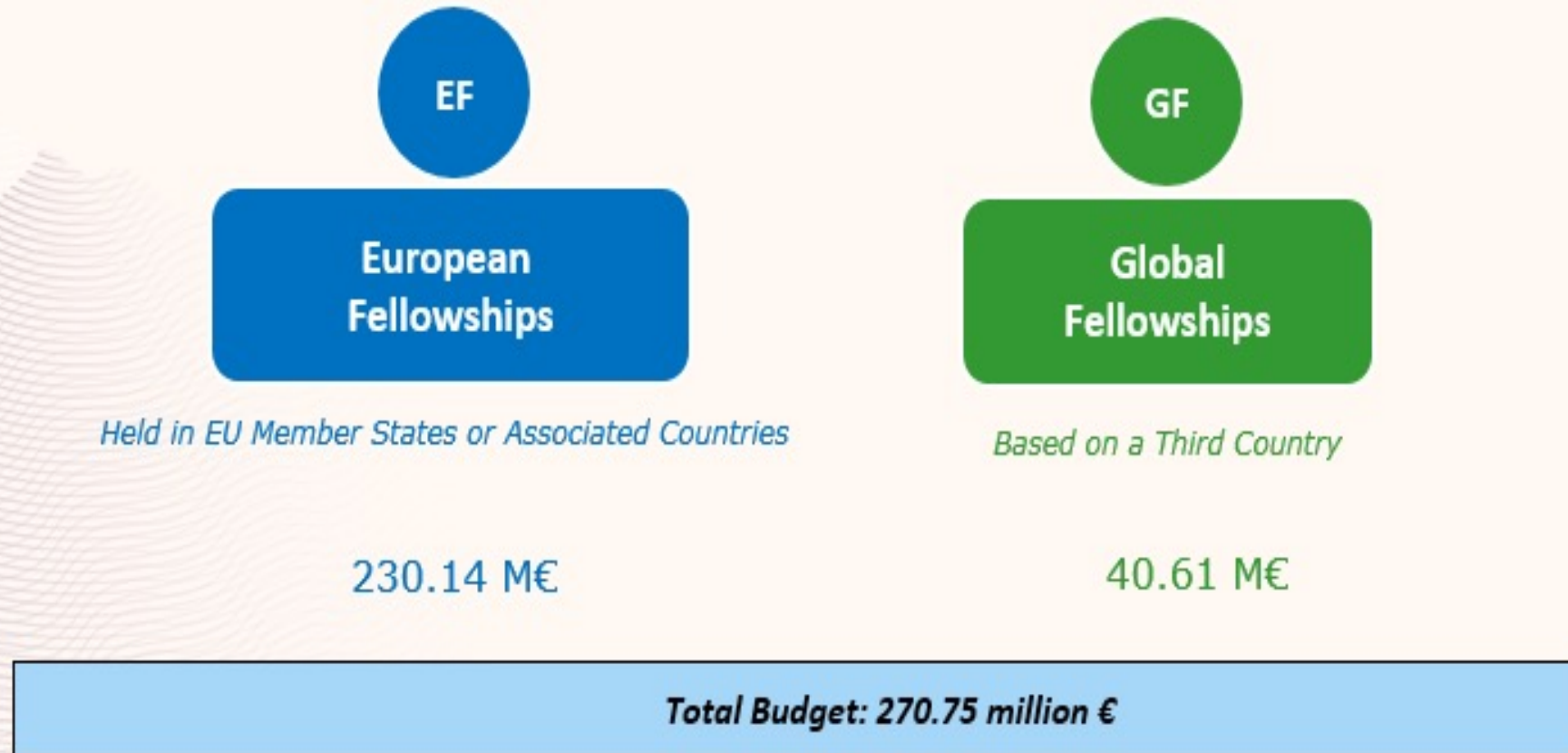
Postdoctoral Fellowships (PF): Types of Action

PF is a mono-beneficiary action to support post-doctoral research and careers and has the following options:

- ✓ European Postdoctoral Fellowships coming to Europe from any country in the world or moving within Europe;
- ✓ Global Postdoctoral Fellowships outside EU Member States and Horizon Europe AC.

[Link for
MSCA Postdoctoral Fellowships 2024](#)

Modes & Budget



Bottom up calls – all domains of research

MSCA Postdoctoral Eligibility Criteria Fellowships

[Link for
MSCA Postdoctoral Fellowships 2024](#)

- **Host beneficiary in EU/AC:** Mono-beneficiary programme
 - **Researcher Mobility:** Any nationality, but <12m in host country in previous 36m (and “long-term resident” for GF)
 - **PhD Requirement:** Applicants must be “in possession of a PhD” or “unconditional defence” before Call deadline
 - **Scientific Age of < 8 years:** But multiple exceptions
- + Resubmission Restrictions (+70% in previous evaluation)

Mobility Rule !!!!



EU Member States / HE Associated Countries

EU Member State (MS): 27 countries/ overseas territories

Associated Country(AC): Albania, Armenia, Bosnia and Herzegovina, Faroe Islands, Georgia, Iceland, Israel, Kosovo, Moldova, Montenegro, North Macedonia, Norway, Serbia, Tunisia, Turkey, Ukraine, Morocco, United Kingdom.

*Morocco, *Canada (still ongoing)

Note: Switzerland is **not** an associated country

Third Country (TC): any other country (n.b. Annex A list of countries that can receive funding)

[Link for
EU Member States](#)

[Link for
HE Associated Countries](#)

Postdoctoral Fellowships (PF): Conditions

Duration

- **EFs:** 12-24 months;
- **GFs:** 24-36 months (12-24 outgoing phase + 12 months mandatory return)

Secondments (non compulsory) Worldwide

- **EFs:** not more than 1/3 of total of project
 - **GFs** not more than 1/3 of total of outgoing phase + a max 3 months at beginning of the project at the beneficiary (to be deducted from the outgoing phase)
- Note:** encoded in Part A (Call specific questions)

Non academic placement (NAP) (non compulsory) EU MS or HE AC

- Additional period of max 6 months after project completion
- Note:** encoded in part A as participant organisation

Evaluation and award criteria

Excellence	Impact	Quality and efficiency of the implementation
Quality and pertinence of the project's research and innovation objectives (and the extent to which they are ambitious, and go beyond the state of the art)	Credibility of the measures to enhance the career perspectives and employability of the researcher and contribution to his/her skills development	Quality and effectiveness of the work plan , assessment of risks and appropriateness of the effort assigned to work packages
Soundness of the proposed methodology (including <i>interdisciplinary</i> approaches, consideration of the <i>gender</i> dimension and other <i>diversity</i> aspects if relevant for the research project, and the quality of <i>open science</i> practices)	Suitability and quality of the measures to maximise expected outcomes and impacts , as set out in the dissemination and exploitation plan, including communication activities	Quality and capacity of the host institutions and participating organisations , including hosting arrangements
Quality of the supervision, training and of the two-way transfer of knowledge between the researcher and the host	The magnitude and importance of the project's contribution to the expected scientific, societal and economic impacts	
Quality and appropriateness of the researcher's professional experience , competences and skills		
50%	30%	20%

[Link for MSCA Work Programme \(2023 – 2024 version\)](#)

Postdoctoral Fellowships (PF) 2024 Call

Call planning

Call Opening:	10 April 2024
Call Deadline:	11 September 2024
Evaluation period:	October 2024 – January 2025
Launch Grant preparation:	March 2025
Project Starting dates:	April 2025 - September 2025

23

[Link for MSCA Work Programme \(2023 – 2024 version\)](#)

MSCA Postdoctoral Unit Contributions

MSCA Postdoctoral Fellowships	Contributions for the recruited researcher per person-month					Institutional unit contributions per person-month	
	Living allowance	Mobility allowance	Family allowance (if applicable)	Long- term leave allowance (if applicable)	Special needs allowance (if applicable)	Research, training and networking contribution	Management and indirect contribution
	EUR 5990	EUR 710	EUR 660	EUR 6700 x % covered by the beneficiary	requested unit ¹³⁷ x (1/number of months)	EUR 1000	EUR 650

*A country correction coefficient (CCC) applies to the living allowance in order to ensure equal treatment and purchasing power parity for all researchers.
CCC for BE: 100%



European
Commission

Ind. overall success rate: **15.8%**

Ind. success rate EF: **15.7%**

Ind. success rate GF: **16.7%**

PF 2023 call - percentiles table

MSCA-PF-2023: Cumulative percentage of proposals above threshold, with a given score or higher (funding range marked in green)

Number of eligible proposals	1074 proposals	121 proposals	1016 proposals	750 proposals	1575 proposals	160 proposals	808 proposals	1580 proposals	57 proposals	8 proposals	73 proposals	84 proposals	130 proposals	9 proposals	76 proposals	397 proposals
Cut off score for funding*	93,0	89,0	94,0	95,2	94,4	92,2	92,8	94,6	95,6	96,2	95,8	97,6	95,6	97,2	94,8	96,0
Score equal to or above	EF-CHE	EF-ECO	EF-ENG	EF-ENV	EF-LIF	EF-MAT	EF-PHY	EF-SOC	GF-CHE	GF-ECO	GF-ENG	GF-ENV	GF-LIF	GF-MAT	GF-PHY	GF-SOC
100	0.47%	1.65%	1.18%	1.33%	1.46%	0.00%	0.25%	1.52%	0.00%	0.00%	0.00%	1.19%	2.31%	0.00%	0.00%	3.02%
99	1.02%	1.65%	1.87%	2.13%	3.17%	0.63%	1.24%	2.97%	0.00%	0.00%	0.00%	4.76%	3.08%	0.00%	3.95%	5.04%
98	3.91%	2.48%	4.63%	5.87%	6.67%	3.13%	3.47%	6.77%	5.26%	0.00%	4.11%	15.48%	6.15%	0.00%	7.89%	8.56%
97	6.33%	4.13%	6.89%	8.93%	8.44%	3.75%	4.83%	9.56%	10.53%	12.50%	8.22%	19.05%	10.00%	11.11%	9.21%	12.34%
96	8.47%	4.96%	9.74%	12.93%	11.56%	5.63%	6.81%	12.22%	12.28%	25.00%	13.70%	27.38%	14.62%	11.11%	10.53%	16.88%
95	10.34%	8.26%	12.30%	16.80%	14.48%	6.25%	10.27%	15.00%	21.05%	37.50%	21.92%	28.57%	20.00%	11.11%	15.79%	19.40%
94	13.31%	9.09%	15.55%	19.33%	17.65%	10.00%	13.24%	17.66%	26.32%	37.50%	23.29%	38.10%	23.08%	11.11%	19.74%	24.69%
93	15.92%	9.92%	18.60%	22.13%	19.75%	13.13%	15.47%	20.19%	29.82%	37.50%	28.77%	39.29%	27.69%	11.11%	26.32%	27.46%
92	19.18%	10.74%	21.46%	25.07%	22.60%	18.13%	19.55%	23.16%	29.82%	37.50%	35.62%	42.86%	29.23%	11.11%	31.58%	29.97%
91	21.97%	12.40%	24.02%	28.00%	26.41%	20.00%	23.64%	24.87%	33.33%	37.50%	42.47%	45.24%	32.31%	11.11%	34.21%	33.00%
90	25.79%	14.05%	26.87%	31.07%	29.40%	24.38%	26.36%	27.28%	35.09%	50.00%	46.58%	45.24%	35.38%	11.11%	36.84%	35.26%
89	28.49%	16.53%	29.92%	33.33%	31.87%	26.88%	28.47%	29.68%	36.84%	62.50%	49.32%	46.43%	42.31%	22.22%	42.11%	38.29%
88	31.38%	16.53%	33.86%	34.93%	34.98%	29.38%	31.31%	32.03%	45.61%	75.00%	57.53%	46.43%	44.62%	33.33%	48.68%	40.55%
87	34.45%	17.36%	35.73%	38.53%	38.29%	35.63%	35.15%	33.92%	49.12%	75.00%	61.64%	48.81%	48.46%	33.33%	52.63%	42.82%
86	37.24%	19.83%	37.70%	41.47%	41.71%	37.50%	37.75%	37.03%	50.88%	75.00%	64.38%	52.38%	52.31%	33.33%	56.58%	45.09%
85	40.22%	21.49%	39.86%	44.00%	44.83%	41.88%	41.34%	40.06%	57.89%	75.00%	65.75%	54.76%	56.15%	33.33%	59.21%	47.86%

*slides taken from EC presentation made in "Horizon Europe Marie Skłodowska-Curie Actions 2023 Calls



ERA Fellowships (widening activities)

- No separate application or evaluation – integral part of the MSCA Postdoctoral Fellowships call application form;
- For specific countries with specific R&I performance – available in Work Programme;
- Must be submitted by a host institution from a ‘Widening’ country;
- Only for EFs, GFs don’t qualify;
- Only proposals scoring over 70% in the PF call will be considered which failed to reach an adequate place in the ranking to be funded under that call;
- Timing aligned with PF call.

NOTE: “call specific question” to be completed in the PF submission for EF to indicate willingness to participate in this call (only if host organisation is a qualifying country)

- *Bulgaria, Croatia, Cyprus, Czechia, Estonia, Greece, Hungary, Latvia, Lithuania, Malta, Poland, Portugal, Romania, Slovakia, Slovenia and all Associated Countries with equivalent characteristics in terms of R&I performance (Albania, Bosnia & Herzegovina, Kosovo 2, Montenegro, North Macedonia, Serbia, Turkey, Armenia, Georgia, Moldova, Morocco, Tunisia, Ukraine, Faroe Islands) and the Outermost Regions (defined in Art. 349 TFEU). Guadeloupe, French Guyana, Reunion, Martinique, Mayotte and Saint Martin (France)*



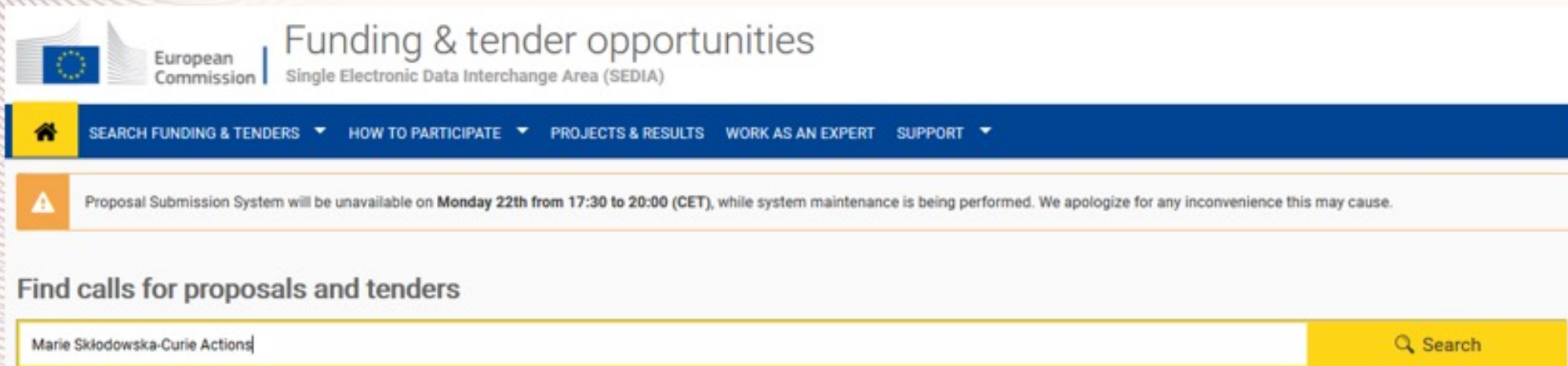
HORIZON EUROPE

How to apply



How to apply?

- All calls are published on the [Funding and Tender Portal](#)
- Applications are submitted through the portal:



European Commission | Funding & tender opportunities
Single Electronic Data Interchange Area (SEDIA)

SEARCH FUNDING & TENDERS ▾ HOW TO PARTICIPATE ▾ PROJECTS & RESULTS WORK AS AN EXPERT SUPPORT ▾

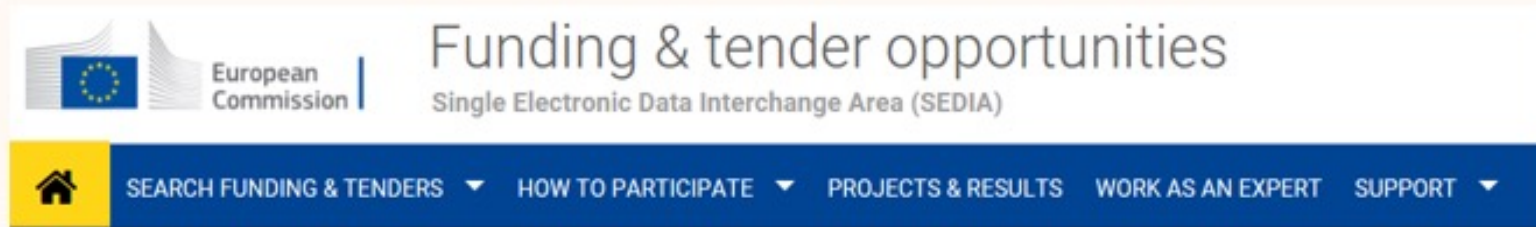
⚠ Proposal Submission System will be unavailable on Monday 22th from 17:30 to 20:00 (CET), while system maintenance is being performed. We apologize for any inconvenience this may cause.

Find calls for proposals and tenders

Marie Skłodowska-Curie Actions

[Link for Funding & Tenders Portal](#) (forthcoming 2024 PF Call)

How to apply?



Part A (structured data)



Part B (description of action)



10 page limit

[Link for the documents provided for 2024 PF call](#)

Proposal Submission- Part B

Part B-1

- strictly restricted to 10 pages;
- a cover page, table of contents, ...on page 1, 2, **will count** towards the page limit and automatically result in excess pages that cannot be evaluated;
- the Part B-1 should start with “1. Excellence” (instructions, definitions to be deleted before submission).

Part B-2

- no page restriction;
- Participating organisations (max 1 page for beneficiary, max ½ page others);
- Researcher's CV;
- Letters of commitment (host for outgoing phase of GF)
- Ethics & Security (additional info, if needed)

Step 5

Edit Proposal

H2020-MSCA-IF-2018

USER NAME
Malgorzata CZERWIEC

TOPIC
MSCA-IF-2018

TYPE OF ACTION
MSCA-IF-EF-ST

A.B.C.
test

DRAFT ID | SEP-210514033

WED 12 DEADLINE (Brussels Local Time)
September 2018 17:00:00

144 days left until closure

Configuration OK

Download Part B
Templates

Edit Proposals' Forms

In this step you can edit the administrative forms and upload the proposal itself. ?

WARNING: This proposal contains changes that have not yet been saved.

Part A: Administrative Forms – on-line only

Administrative Forms

Edit will open the forms. ?

edit forms

view history

print preview

Part B and Annexes

In this section you may upload the technical annex of the proposal (in PDF format only) and any other requested attachments. ?

Part B1

upload

✗

?

Part B2

upload

✗

?

Parts B: PDF to be uploaded

Part B: Template available to download

Video



How to find a host

Own network

[Euraxess](#)

[MSCA-NET](#)

[MSCA
matchmaking
platform](#)

[Funding and
Tenders portal](#)

EURAXESS Malta
- [Find a host
entity in Malta](#)

Common mistakes



Mistakes in MSCA EF applications

- Wrong type of action encoded: GF instead of EF or vice versa
- Information about physical people and basic proposal details:
 - Researcher and Supervisor are NOT the same person
 - Missing abstract, panel and keywords
- Wrongly encoded NAPs, secondments and short visits
 - 50% of the encoded NAPs were secondments/short visits and not non-academic placements

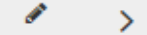
After the proposal is created, please **list all Participants** to the proposal

The screenshot shows a progress bar at the top with four steps: 'Create proposal' (completed), 'Participants' (current step), 'Proposal forms', and 'Submit'. Below the progress bar, there are three informational and warning messages. The first message states that only the coordinator can edit elements and that changes are only applied after clicking 'Save Changes'. The second and third messages are warnings about the requirement for at least one associated partner for outgoing phases in third countries and for partner organizations. Below these messages, a box indicates 'Number of participants: 1'. The main section is titled 'Applicant (Future Beneficiary)' and shows a participant named 'Test' with a redacted name, address 'Brussels, BE', and a redacted PIC. To the right of the participant details is a 'Contacts' section with an 'Add contact +' button. At the bottom of the participant section are 'Change organisation' and 'Contact organisation' buttons. At the bottom of the entire form are 'Add Partner +' and 'Add Associated partner +' buttons, with the latter highlighted by a red box. At the very bottom are 'SAVE', 'SAVE AND GO TO NEXT STEP', and 'NEXT' buttons.

Contacts: ⓘ

Add contact +

Jane Doe - Supervisor



Mario Rossi - Researcher



Jean Dupont - Contact person



Maximum three contacts can be listed for the host Applicant

Please only encode **associated partners ONLY** for:

- **Outgoing Phase (TC) – ONLY FOR GF**
- **Non-Academic Placement (MS/ HE AC) – IF APPLICABLE**

Do not encode hosts for secondments here

Number of participants: 3

Applicant (Future Beneficiary)

1 Test Camelia-Valeria

Test Camelia-Valeria
Brussels, BE
PIC: 913842918

Contacts: 0 Add contact +

Jane Doe - Supervisor

Mario Rossi - Researcher

Jean Dupont - Contact person

Change organisation Contact organisation

Associated Partner

2 OFFICE FOR SPONSO
RED PROGRAMS

PRESIDENT AND FELLOWS OF HARVARD COLLEGE
CAMBRIDGE, US
PIC: 992204077

Change organisation Contact organisation

Associated Partner

3 Microsoft Research &
Development France

Microsoft Research and Development France
Issy Les Moulineaux, FR
PIC: 989925450

Change organisation Contact organisation

Add Partner + Add Associated partner +

SAVE SAVE AND GO TO NEXT STEP NEXT

Maximum Nb of Participants for **GF**: 3
Maximum Nb of Participants for **EF**: 2

Host Applicant (MS/HE AC)

ASSOCIATED PARTNERS

First Associated partner: Host of Outgoing Phase (Third Country)

Always put the outgoing phase partner first

Second Associated partner: Host for Non-Academic Placement (MS/HE AC)



Do not encode hosts for secondments here

How to encode the **Associated partners in the proposal** (part B2):

- **Add** the outgoing phase host and the NAP host as associated partners in **Tables 5.1 and 5.2 of part B2**

5.1 Template table: *Overview of Participating Organisations*




Organisation role	PIC	Legal Entity Short Name	Academic organisation (Y/N)	Country	Name of Supervisor
Beneficiary					
Associated partner linked to a beneficiary (if applicable)					
Associated partner for outgoing phase (mandatory for GF)					
Associated partner for secondment (optional)					
Associated partner for non-academic placement (optional)					
Other:					

5.2 Template table: *Capacity of the Participating Organisations*

Choose one of: <input type="checkbox"/> Beneficiary (compulsory) <input type="checkbox"/> Associated partner linked to a beneficiary (if applicable) <input type="checkbox"/> Associated partner for outgoing phase (compulsory for GF only) <input type="checkbox"/> Associated partner for secondment (optional) <input type="checkbox"/> Associated partner for non-academic placement (optional)	
[Full name + Legal Entity Short Name + Country]	
General description	
Role and profile of supervisor	
Key research facilities, Infrastructure and Equipment	<p><i>Demonstrate that the beneficiary has sufficient facilities and infrastructure to host and/or offer a suitable environment for training and transfer of knowledge to the recruited experienced researcher.</i></p> <p><i>If applicable, indicate the name of the associated partner linked to a beneficiary and describe the nature of the link in the corresponding table.</i></p>
Previous and current involvement in EU-funded research and training programmes/actions/projects	<p><i>Indicate up to 5 relevant EU, national or international research and training actions/projects in which the institution/department has previously participated and/or is currently participating.</i></p>

The word “**Optional**” refers to the fact that the NAP is optional to the proposal (not a mandatory element of the application). **If it is part of the proposal, it needs to be addressed here (this is not optional).**

How to encode secondments

-  Do not encode it as an Associated Partner (section 1 – Participants)
-  Encode it in section 5 – Other Questions
-  Describe it in the narrative part B1 and in the dedicated tables in part B2

Most common errors in budget

- Wrongly encoded nations (TC instead of MS/HE AC for host beneficiary, NAPs in TC)
- Wrong duration of different phases (EF duration, GF outgoing phase, GF return phase, NAP)
- Wrong budgets (directly related to wrong durations)
- Wrong Country Coefficient (directly related to wrong nation encoding)
- Secondments/short visits added as Associated Partners generated an extra budget

Validation errors and warnings

- Several applications submitted with **Warnings not addressed**



Warning - indicating the criterion that should be respected to have an admissible application



Blocking issue - if not solved, submission will not be possible

Additional opportunities: PF2MT & MSCA-NET



Postdoctoral Fellowship Training Scheme for Incoming Postdocs to Malta (PF2MT)

- [PF2MT](#) supports travel and accommodation expenses for experienced researchers willing to submit a proposal with Maltese entity host for the MSCA Postdoctoral Fellowship call with deadline 11th September 2024
- Closing date: 7th June 2024
- MSCA PF masterclass training date: 26th and 27th June 2024
- Location: Kalkara, Malta
- Very short application form on PF2MT call page

PF2MT financing

Lump sum grant:

- Eur 800 for participants from EU MS/AC
- Eur 2000 for third countries
- 50% to be provided following participation at the training and provision of boarding passes and air ticket
- Remaining 50% following proposal submission
- Applicants are responsible for their travel arrangements and VISA

PF2MT Eligibility

- Applicants needs to meet the MSCA PF eligibility conditions in order to be considered eligible for PF2MT
- Administrative check only
- Supervisor to be already identified (will be verified)
- Applications to be funded first come, first serve until the fund is absorbed
- [Find a host entity in Malta](#)



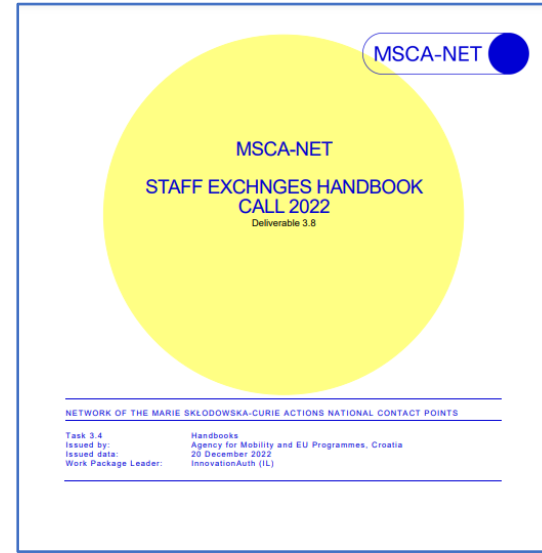
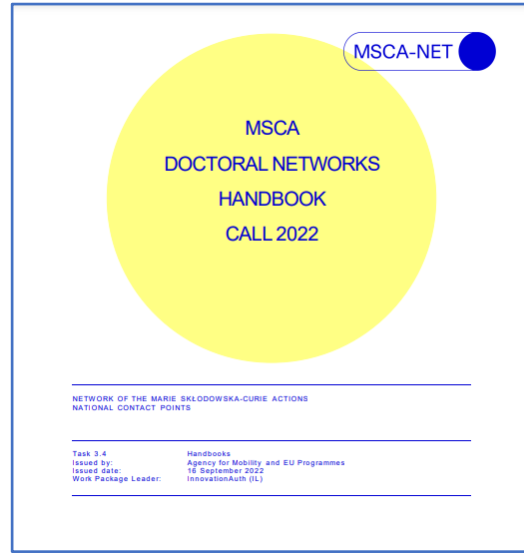
MSCA-NET PROJECT

All MSCA National Contact Points around the world
are collaborating thanks to this project..

[Link for project website](#)



Handbooks



MSKA Handbooks

The MSKA-NET project will prepare a handbook for each MSKA calls. These handbooks will provide you with up-to-date tips and tricks on how to ace the MSKA proposals.

[PF 2022 Handbook](#)
[DN 2022 Handbook](#)

Scientific Community ▼ MSKA NCPs

- MSKA Postdoctoral Fellowships (PF)
- MSKA Doctoral Networks (DN)
- MSKA Staff Exchanges (SE)
- MSKA COFUND

[Link for project website](#)

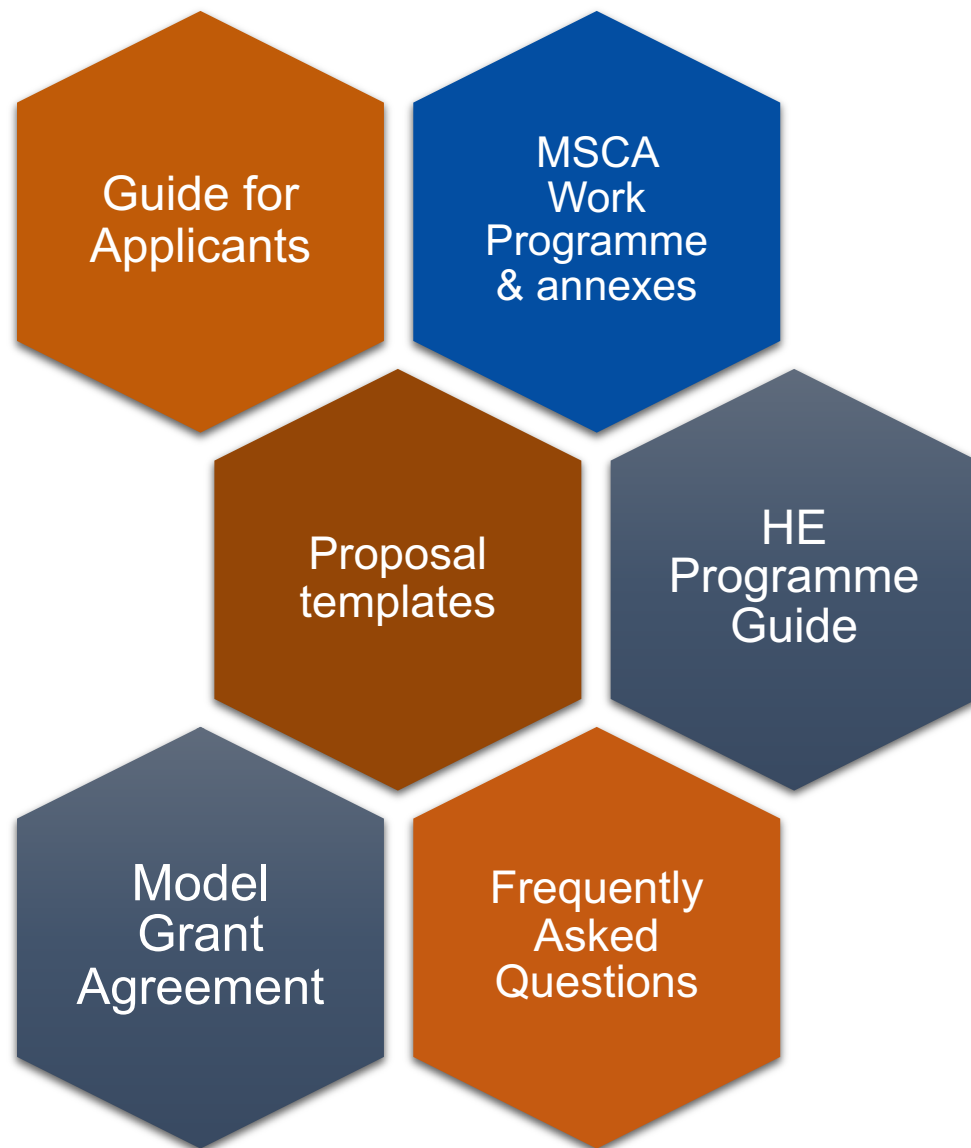
STOCK, MANAGE AND SHARE YOUR DOCUMENTS

Library > 05. Horizon Europe - MSKA-NET > 2. Tools developed in the project > Handbooks

Page 1 / 1

<input type="checkbox"/>	Name
<input type="checkbox"/>	MSKA_COFUND_Handbook_2022_final.pdf MSKA_COFUND_Handbook_2022_final.pdf
<input type="checkbox"/>	MSKA_SE_Handbook_2022_final.pdf MSKA_SE_Handbook_2022_final.pdf
<input type="checkbox"/>	MSKA_PF2022_handbook_final.pdf MSKA_PF2022_handbook_final.pdf
<input type="checkbox"/>	MSKA_DN_Handbook_2022_final.pdf MSKA_DN_Handbook_2022_final.pdf

Documents by European Commission



Useful links

- [MSCA Work Programme](#)
 - [MSCA web](#)
 - [MSCA PF 2024 call page](#)
- [MSCA PF Guide for applicants](#)
- [MSCA matchmaking platform](#)
- [MSCA-NET & EURAXESS hosting offers](#)
 - [MSCA-NET handbook with tips](#)
 - [List of MSCA NCPs](#)
 - [PF2MT call page](#)
 - [Find a host entity in Malta](#)
 - [R&I landscape in Malta](#)



Thank You

Lili Kankaya
Senior Executive, MCST
lili.vasileva@gov.mt

Find us on

