

EUROPEAN RESEARCH DAY 2023:
POLAND ポーランド

dr hab. Maciej M. Sokołowski (PhD, DSc)

マチェイ ソコロフスキー

Specially Appointed Associate Professor
Keio University SFC
Faculty of Policy Management

 **SFC** Keio University
Shonan Fujisawa Campus



Maria Skłodowska Curie Award

JST and the Embassy of the Republic of Poland in Japan have established the **Maria Skłodowska Curie Award** commending young female researchers who aim to be active on the global stage

Eligibility:

- **early career female researchers** who have obtained a PhD within the last five years, PhD students, and those who are equivalent to them
- any research discipline related to science and technology
- citizen of Japan, regardless of place of residence

Main Prize (1): **JPY 500 000 + travel expenses** (transportation and accommodation) to visit research institutes in Poland (duration: two weeks)

Inspiration Prize (2): **JPY 250 000**

Organizers:



Supporters:



Polish Returns

NAWA Chair

The Bekker Programme

The Iwanowska Programme

The Ulam Programme

The Ulam Programme - Seal
of Excellence

The Walczak Programme

NAWA Urgency Grants

International cooperation and
exchange

CEEPUS

NAWA Medic

Scientists - Solidary with
Belarus

PRELUDIUM BIS NAWA

IMPRESS-U NAWA



POLISH NATIONAL AGENCY
FOR ACADEMIC EXCHANGE

Supporting academic mobility stands among NAWA's most important objectives.

NAWA's offer addressed to scientists covers numerous programems.

<https://nawa.gov.pl/en/scientists>



The aim of the Ulam Programme is to increase the internationalisation of Polish institutions of science and higher education.

Scientists regardless of their age, from all around the world and representing all fields of science, including Polish scientists working permanently abroad (they may constitute a maximum of 10% of Fellows in the call).

Activities to be carried out during the Scholarship may include:

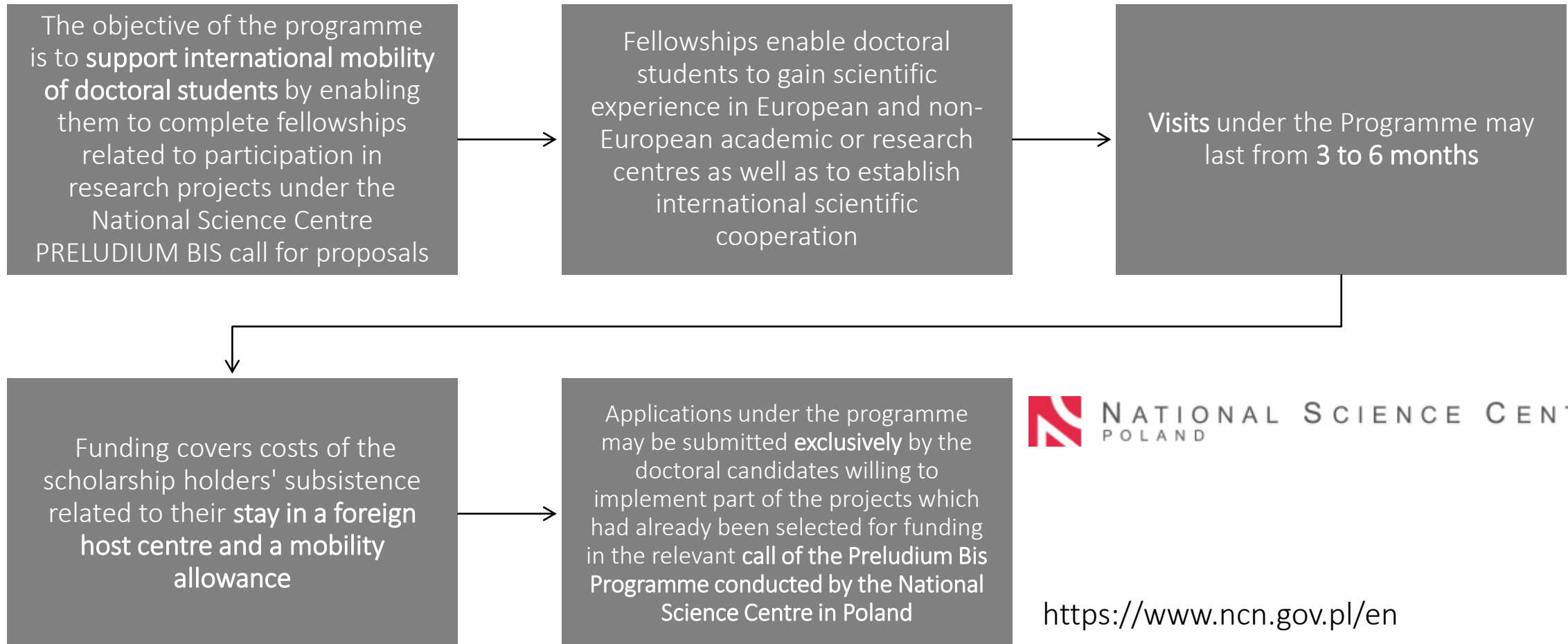
- conducting research and/or development work
- post-doctoral training
- obtaining materials for scientific work or publication
- the visit may also include conducting classes at the Host institution

The visits under the Project can last from 6 to 24 months.

The Programme provides financing for a Scholarship that covers the Fellow's living allowance of PLN 10 000 (JPY 360 000) a month, along with a mobility allowance

Stanisław Marcin Ulam (1909 -1984) was a brilliant Polish mathematician who earned a PhD from the Lviv Polytechnic in 1933. Prof. Ulam was a member of the internationally renowned Lviv School of Mathematics and co-author of the Scottish Book. Just before the outbreak of the Second World War, he went to the USA to join the Institute for Advanced Study in Princeton. Several American universities appointed him as an associate professor (e.g. University of Wisconsin, University of Colorado Boulder, Florida State University)



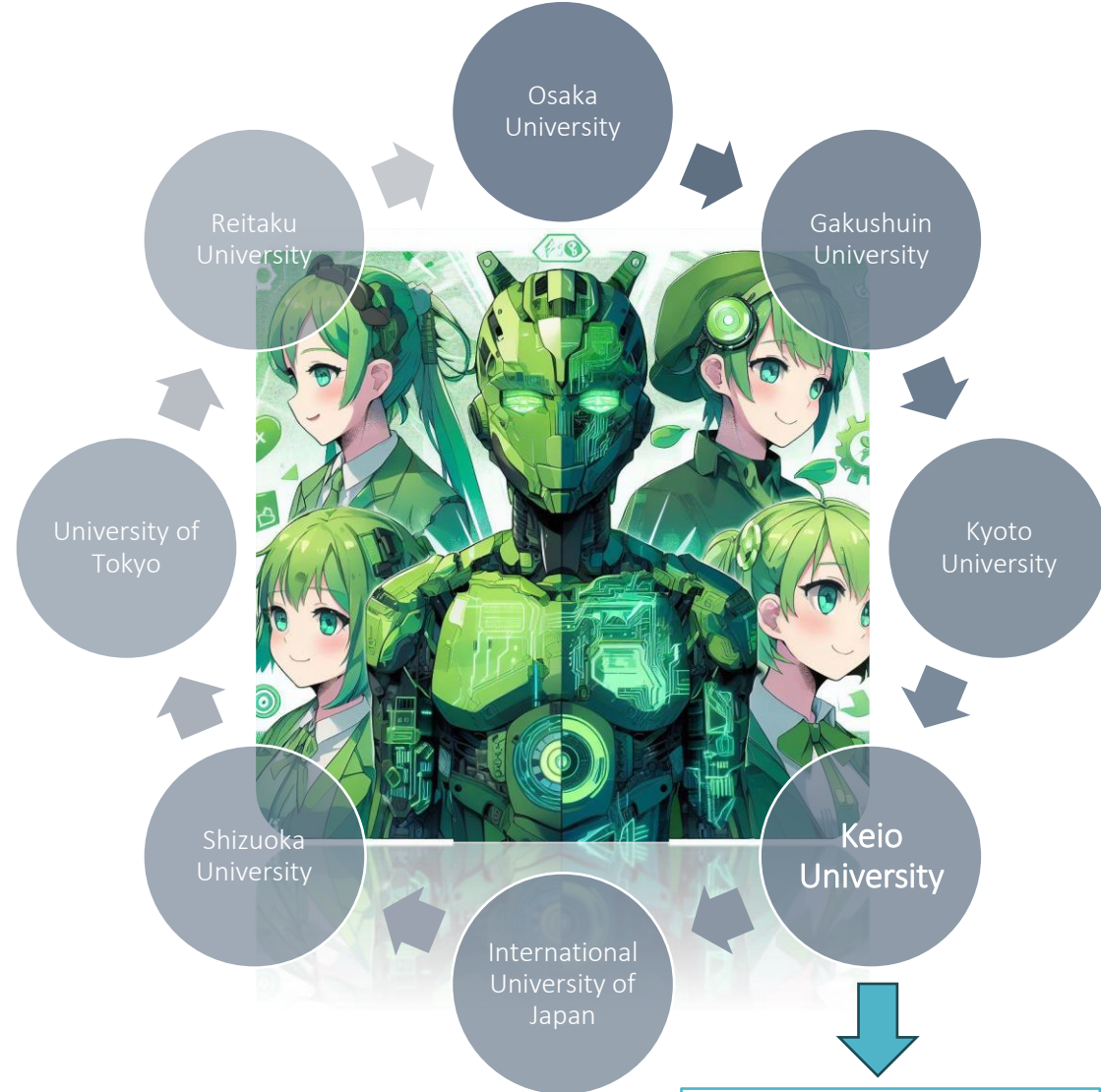


Realization of a Society that can Use Cybernetic Avatars Safely and Securely

By enhancing the social acceptability of CA's, we aim to open up a world in which CA's become alter egos and interact with other CA's; in other words, a 'New Communication CA Civilisation'

For ensuring safe/ secure use of CA's, (Cybernetic Avatar) in society, we aim to realise an infrastructure for CA safety and security, which will and be achieved through CA operator authentication, (user authentication) /proof of operator official CA identity, (CA authentication/notarisation)

For resolving social and institutional issues to be overcome for the realisation of an Avatar lifestyle, we will identify **Ethical, Economic, Environmental, Legal, and Social Issues**, (E³LSI) and develop proposals for the resolution of technical and institutional issues at domestic and international levels



Prof. Fumio Shimpo

 SFC Keio University
Shonan Fujisawa Campus

This work is supported by JST Moonshot R&D Grant Number JPMJMS2215



THANK YOU
DZIĘKUJĘ
ありがとう

dr hab. Maciej M. Sokołowski (PhD, DSc)
マチェイ ソコロフスキー

Specially Appointed Associate Professor
Keio University SFC
Faculty of Policy Management

 SFC Keio University
Keio University
Shonan Fujisawa Campus

