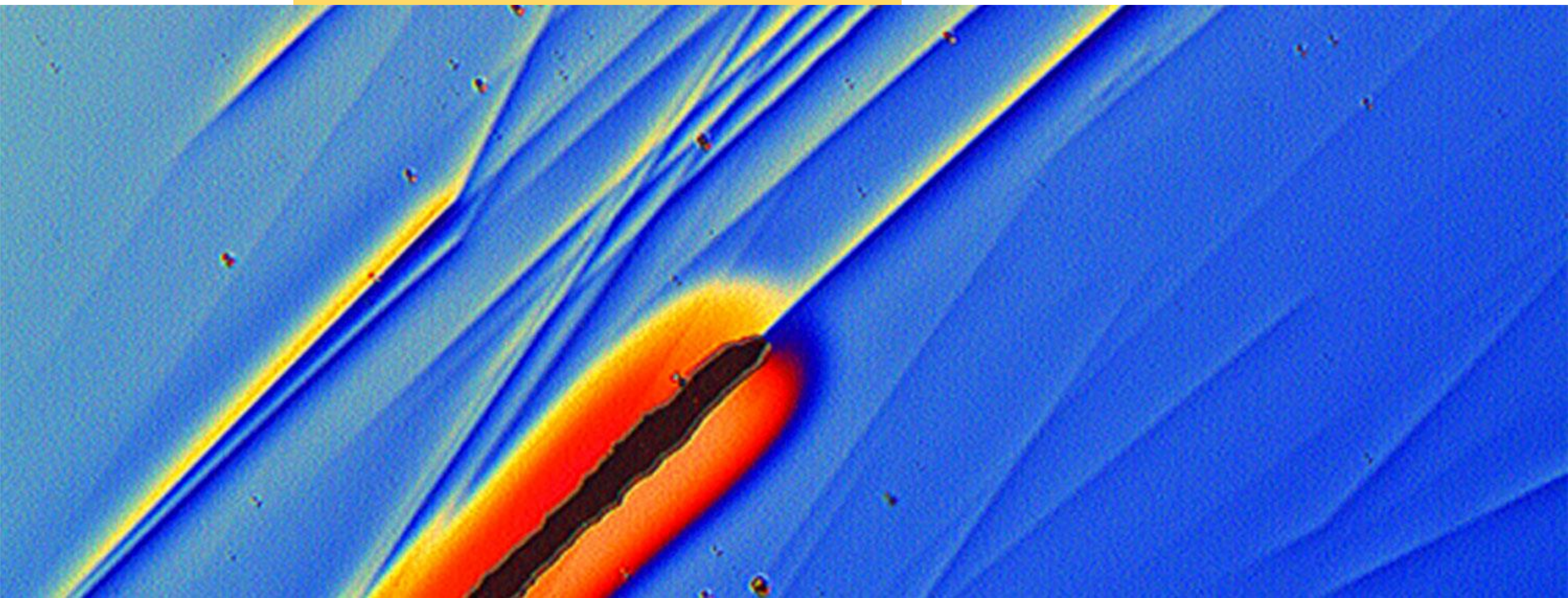




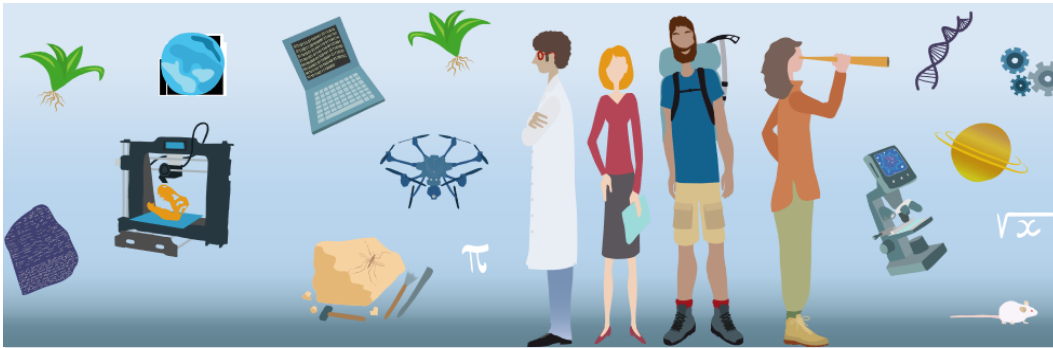
# Transatlantic research collaboration: Needs and challenges

Sylvette Tourmente, director of CNRS office , US and Mexico.



• 1

# What is CNRS ? French national center for scientific research

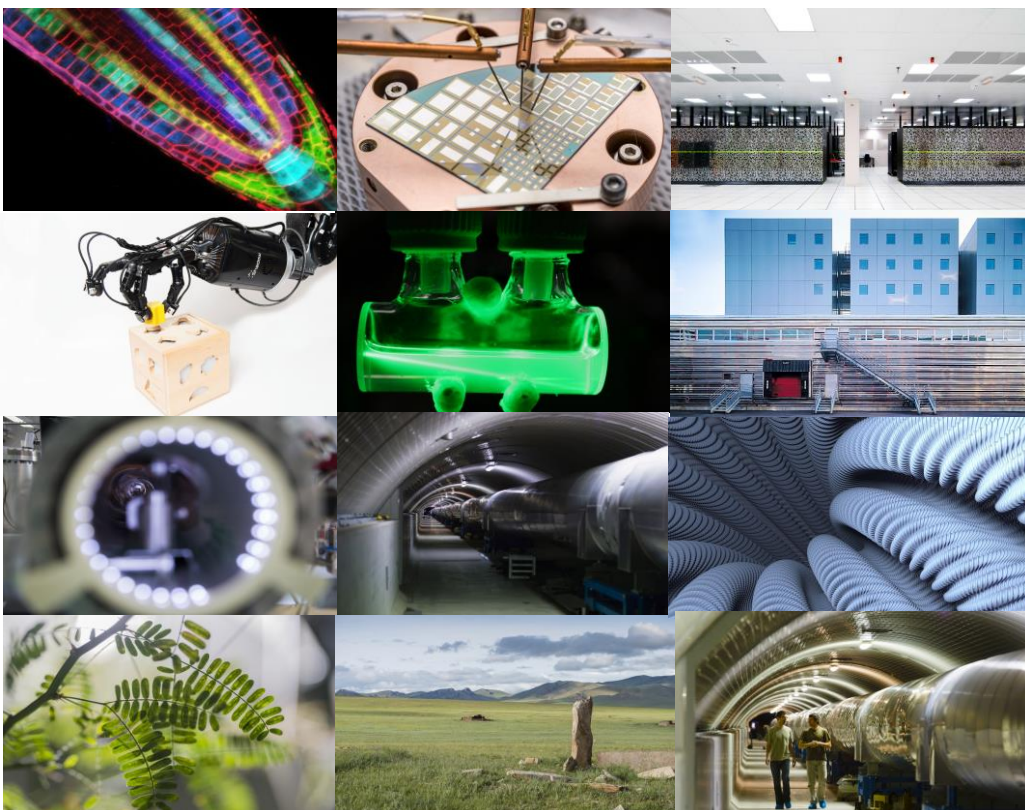


- 32,000-strong workforce
  - ..... 24,600 permanent staff members
  - ..... **11,100 researchers**
  - ..... 13,500 support staff

The largest publicly-funded research performing organisation in the EU



# • 1 all fields of knowledge



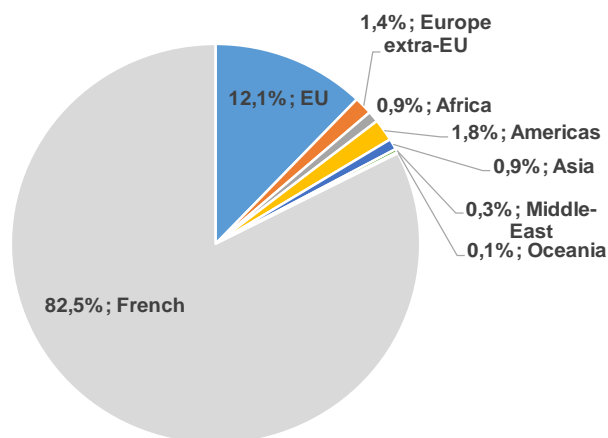
**10 scientific institutes** coordinating and implementing the scientific policy

Biology  
Chemistry  
Ecology & the Environment  
Human & Social Sciences  
Engineering & Systems  
Mathematics  
Nuclear & Particle Physics  
Physics  
Information Science  
The Earth & the Universe

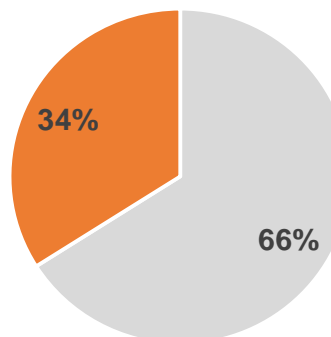
## • 2

# The cnrs offers an internationalised research environment

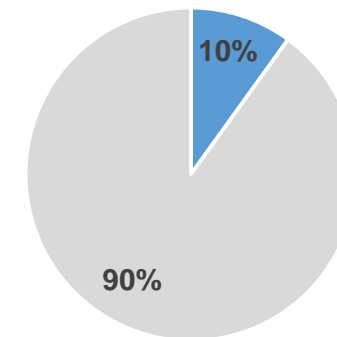
Permanent Researchers of Foreign Citizenship



Annually Recruited Permanent Researchers of Foreign Citizenship



Heads of CNRS Laboratories of Foreign Citizenship



17% permanent researchers working with CNRS are foreign citizens

**34% newly recruited permanent researchers are foreign citizens**

10% heads of laboratories are foreign citizens



**3,300 foreign researchers**  
(permanent & contract) in total

# 2

## INTERNATIONAL PARTNERING TOOLS

2019

A new typology of international tools

International Emerging Actions (IEA)	International Research Networks (IRN)	International Research Projects (IRP)	International Research Laboratories (IRL)	International Research Centres (IRC)
Bottom-up exploration tool	Strengthening a collaboration		Enlightening emblematic actions decided at a strategic level with a strong local presence	Strategic partnership (joint evaluation)
Building a capacity to develop our strategic orientations	Simplifying international agreement processes			Joint scientific commission for sharing mutual objectives

# CNRS priority: fundamental research at the service of society

- Societal challenges: **climate change**, **energetic transition**, artificial intelligence, educational inequalities, **Health** and **environment**, territories of the future.
- Sustainable development goals
- Multidisciplinary approach

# Two testimonies

Naomi Taylor, Medical doctor, researcher in oncologic pediatry at NIH, and director of the **IRP (International Research Project)** CNRS Nutrimmune.

Joaquin Ruiz, Vice President, Global Environmental Futures, Director of Biosphere 2, Executive Director **IRC CNRS (International Research Center)** France-Arizona Institute for Global Grand Challenges, University of Arizona

Questions:

- Why an internal collaboration? with CNRS researchers ?
- What is the added value ?
- What are the difficulties ?
- Why an IRP or IRC ?