



ENRICH

EUROPEAN NETWORK OF
RESEARCH AND INNOVATION
CENTRES AND HUBS, USA



III. The ENRICH in the USA Network

Vision – Mission - Values



A self-sustaining network of centres connecting & supporting European R&I actors in the US market, and thereby strengthening the position of Europe as a world leader in science, technology and innovation



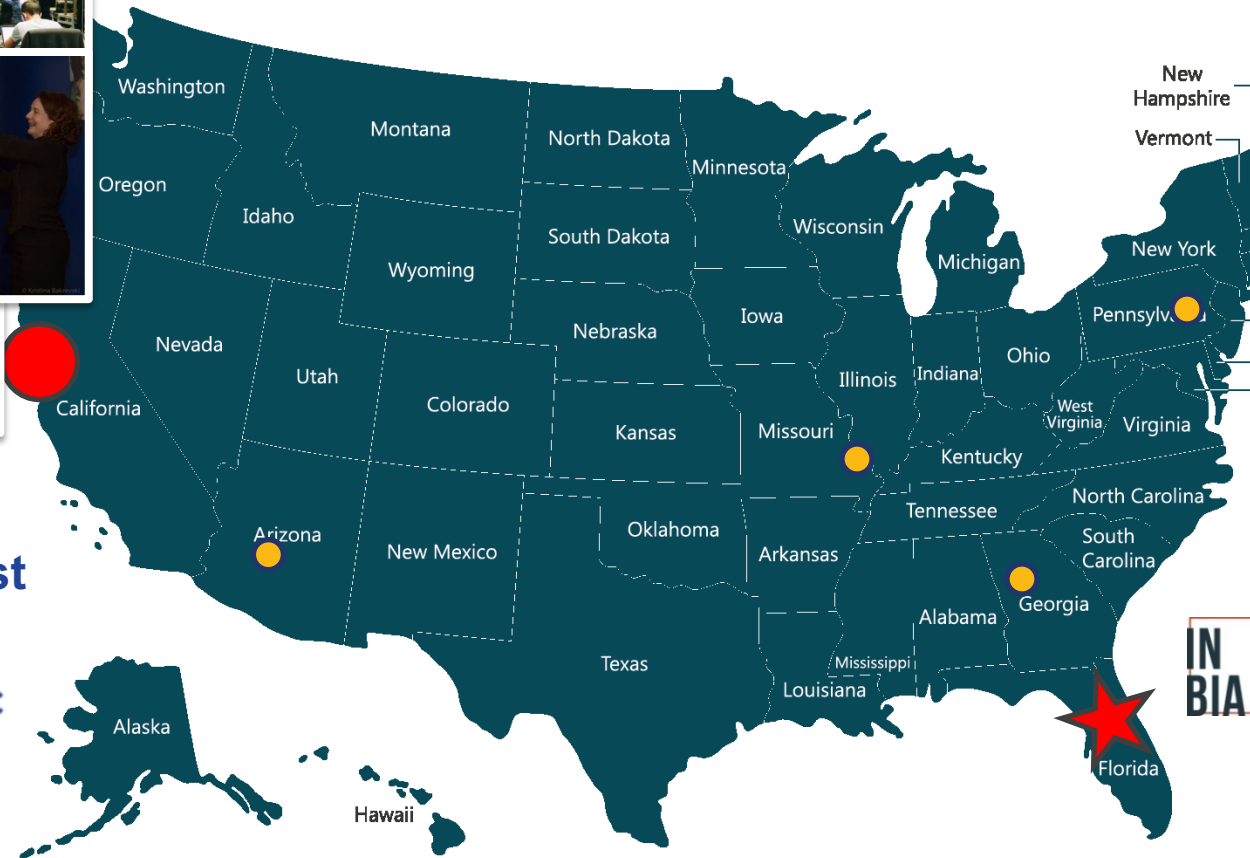
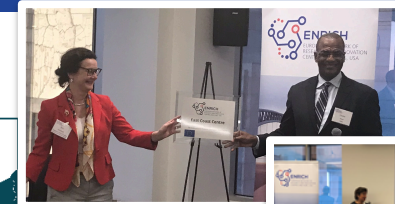
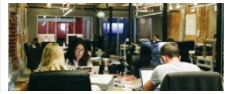
The delivery of standardised and tailor-made R&I internationalisation support services to European R&I actors to accelerate their access to the US ecosystem and maximise their chances of success there



- Excellence in R&I
- Synergies
- Open & Transparent
- Inclusive
- Sustainable
- Responsible R&I
- Added Value & Complementarity

III. The ENRICH in the USA Network

Two Centres and five Landing Hubs



- New Hampshire
- Vermont
- Massachusetts
- Rhode Isl
- Connecticut
- New Jersey
- Delaware
- Maryland

Boston East Coast Centre



San Francisco West Coast Centre



 **2 physical Centres**

 **5 selected Landing Hubs (more to come)**

IV. ENRICH Service Portfolio

Clustered by Service Categories



INFORMATION SERVICES

- Market & RDI Studies
- First Aid Information Kits
- Online Education Modules

Bundled Information & Relevant Knowledge



GUIDANCE, TRAINING & INFRASTRUCTURE

- Webinars
- Hot Desks
- Training on Internationalisation

Empowerment-Competencies & Capabilities



MATCHMAKING & EVENTS

- Working Visits
- Innovation Tours
- Matchmaking & Pitching Events
- Research Connection Symposia

Trustful Relations between R&I&B Actors



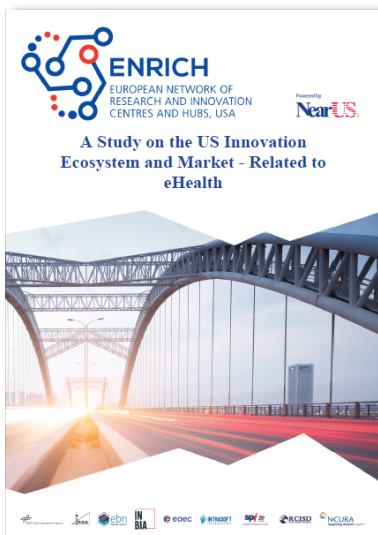
ADVICE & COACHING

- Research Commercialisation Bootcamps
- Business to Business Bootcamps
- Business Acceleration Programme
- Media Training

Customized Support

IV. ENRICH Service Portfolio

ENRICH in the USA Experience – Your Journey



GET INFORMED!

Learn about the US market and its research landscape from home!



GET GOING!

Receive in-depth mentoring and training customized to your needs!



GET CONNECTED!

Explore the US research and innovation landscape by travelling!



GET FUNDED!

Find the money for your research, commercialisation or business development!



IV. ENRICH Service Portfolio

Impressions from the pilot services



Research Connection Symposium



Training in Budapest



Match&Pitch
@CES



WEST Coast and East Coast Hot Desks



West Coast Innovation Tour 2018



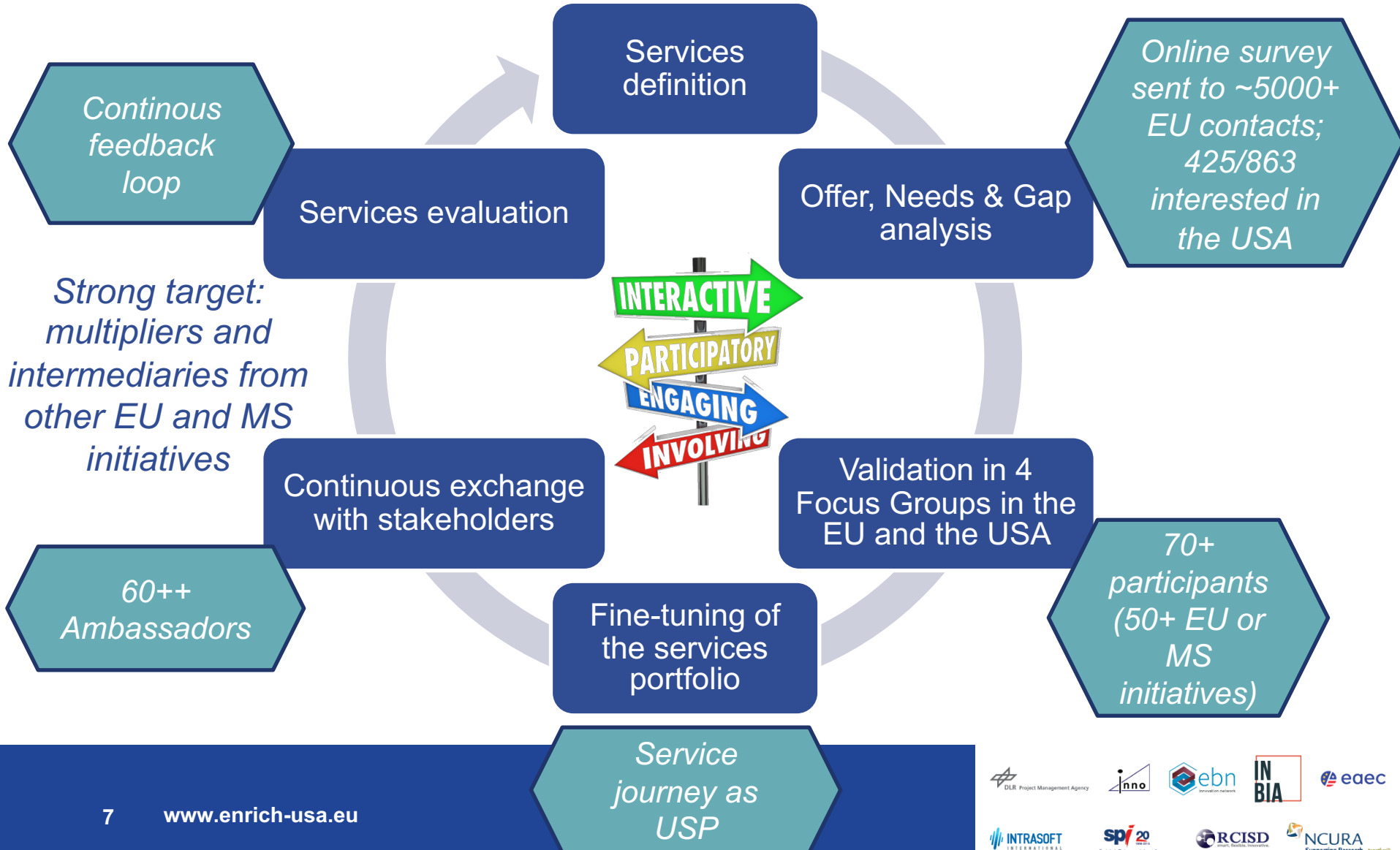
East Coast Innovation Tour 2018

Service Provision by Consortium Partners with many external RDI stakeholders, such as:



V. Stakeholder engagement

A demand-driven and evidence based approach



VII. Outcome & impact

The way forward – service planning

Service	Date	Planned Participants
Match&Pitch @CES	January 2019	20
West Coast Innovation Tour	Spring 2019	20
Pitch Event	April 2019	10
East Coast Innovation Tour	June 2019	20
Pitch Event at BIO	June 2019	20
Match&Pitch	September 2019	20
Research Connection Symposium	September 2019	20
Working Visit	September 2019	5

...more services in preparation

General Enquiries: usa@enrichcentres.eu

www.enrich-usa.eu

Services of ENRICH in the USA: contact Johanna.Fuellmann@dlr.de

Synergies with other initiatives: contact s.klessova@inno-group.com



https://twitter.com/enrich_usa



<https://www.facebook.com/ENRICH.usa>



<https://www.linkedin.com/groups/13534845>



<https://www.youtube.com/channel>