

# Welcome - Willkommen



## Research & Funding Opportunities in Germany: Presentation to African STEM Students

14 August 2020

# Your DAAD information menu today:

- DAAD – who are we?
- DAAD Funding for Master courses in Germany
- Introduction to the German Research Landscape
- DAAD Funding for PhD studies in Germany
- The supervisor – that elusive individual?

# The DAAD is ...

... a self-governing organisation of German universities:

- 242 member universities
- 104 student bodies

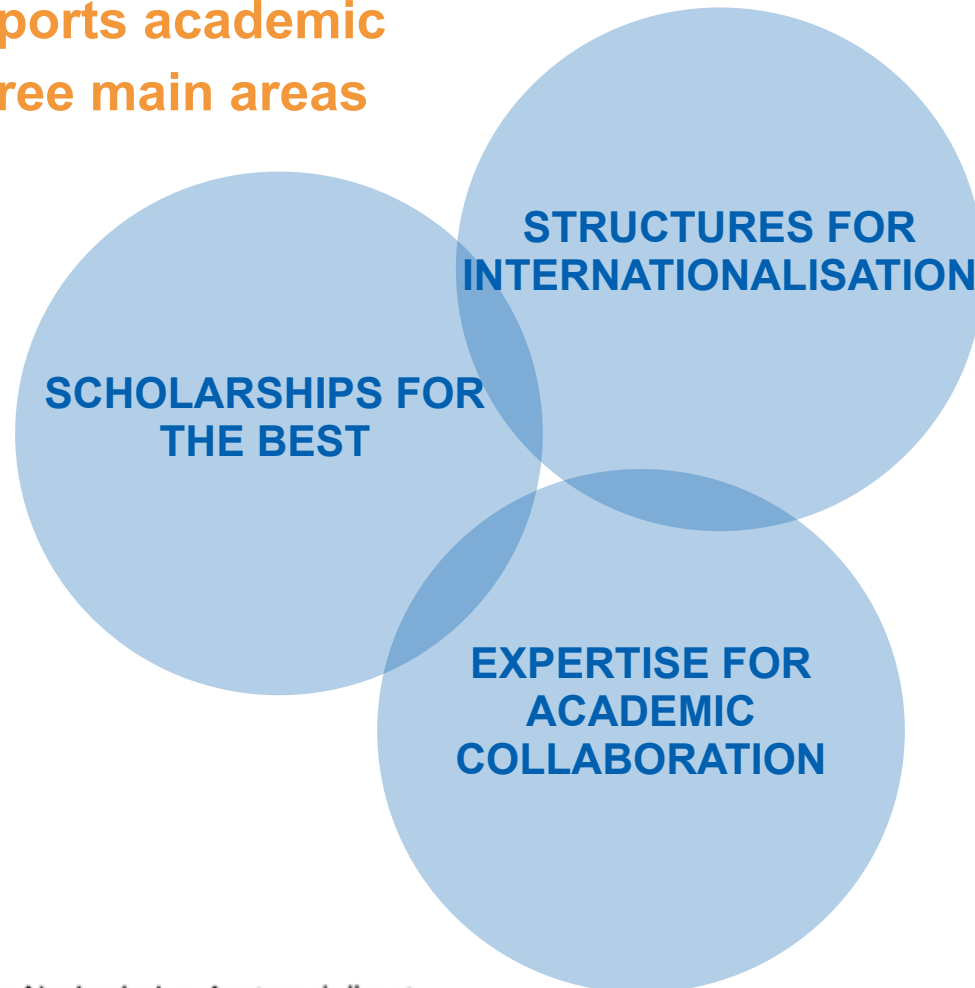
The map shows  
263 university locations  
in Germany

[www.daad.de/scholarships](http://www.daad.de/scholarships)



# Goals and tasks of the DAAD

The DAAD supports academic exchange in three main areas



# DAAD funding recipients from Germany and abroad

Supporting students, researchers and artists from Germany and abroad  
(1950 bis 2019)



**1,545,000**

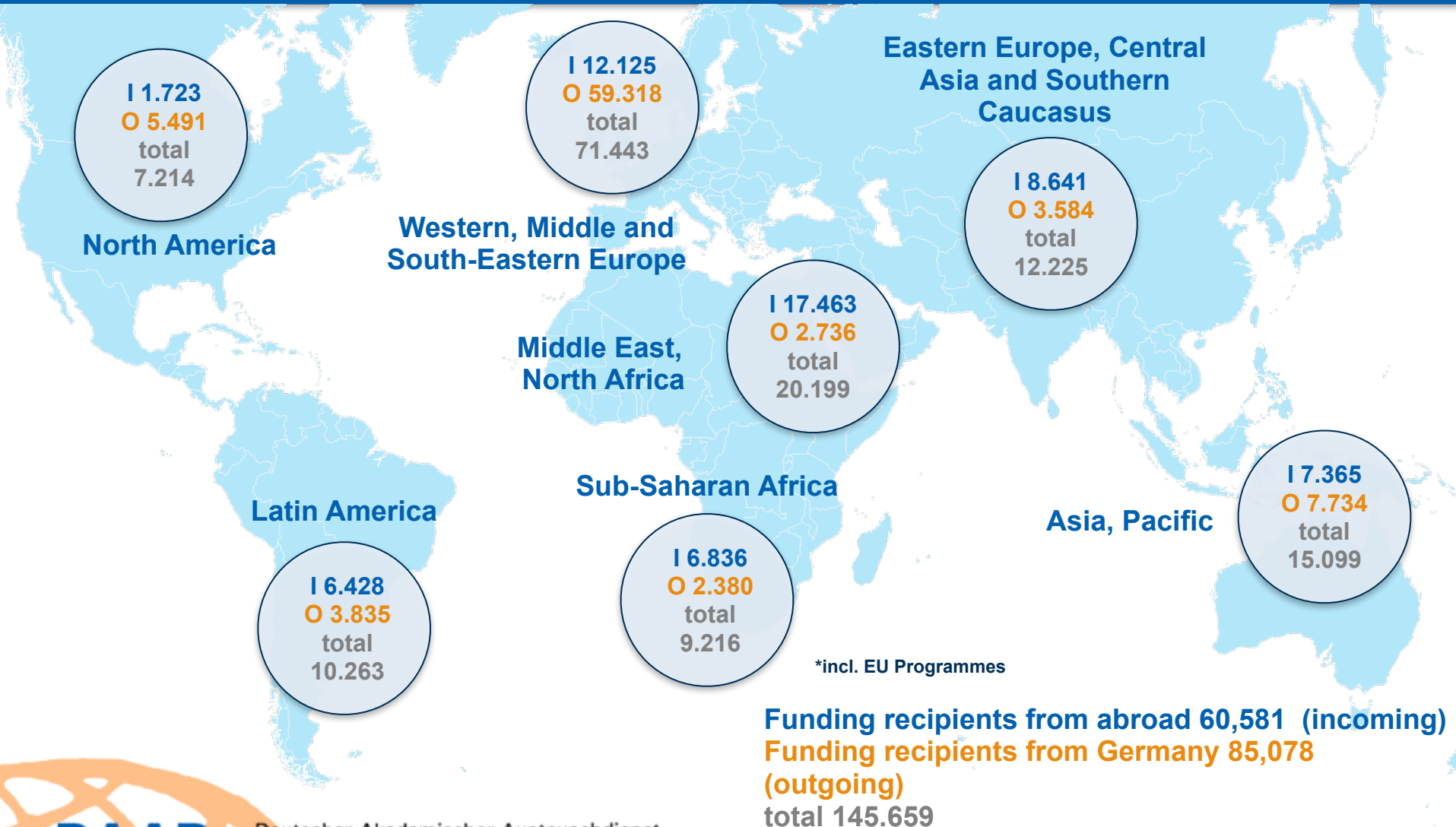
**funding recipients from  
Germany**  
85,078 in 2019

**1,060,000**

**funding recipients from abroad**  
60,581 in 2019

# Origins and destinations of DAAD scholarship holders in 2019\*:

Incoming recipients to Germany (I) and outgoing German recipients (O)



# DAAD Funding for Master courses in Germany



© Michael Jordan

**DAAD**

Deutscher Akademischer Austauschdienst  
German Academic Exchange Service

# DAAD Scholarships I: Development-related Postgraduate Courses (EPOS)

## Educating Professionals for Sustainable Development – Scholarships in Germany

- courses in the fields of agriculture, engineering, public health, environmental sciences, regional planning, social sciences
- Full and partial scholarships
- APPLICANTS are young professionals from developing countries, working in either a public authority or a state or private company, with an **outstanding academic degree** and **at least two years of work experience in their field of study**
- Possess a previous degree not older than 6 years

APPLICATIONS (both for intake AND scholarship) at the respective university, check deadline and requirements on website

[www.daad.de/epos-info](http://www.daad.de/epos-info)



# DAAD Scholarships II: Helmut Schmidt Programme

## 8 Master Courses in Public Policy and Good Governance (PPGG)

- designed to academically qualify future leaders in politics, law, economics and administration
- **No previous work experience required**
- APPLICANTS are young graduates from developing countries with a **very good first degree** who in the future want to actively contribute to the social and economic development of their home countries
- Possess a Bachelor's degree not older than 6 years
- **Annual application deadline: July 31**

APPLICATIONS (both for intake AND scholarship) at the respective university, check requirements on website

[www.daad.de/ppgg](http://www.daad.de/ppgg)

# Value of DAAD Master Scholarships to Germany

- Monthly stipend of 850 EUR
- Health insurance cover
- Travel allowance to and from Germany
- German language course prior to start of Master's course

APPLICATIONS (both for intake AND scholarship) at the respective university, check requirements on website



A photograph of a modern building with curved balconies and large windows. The building is multi-storied and features a unique architectural design with curved balconies and large windows. The balconies are dark-colored and have a metal railing. The windows are large and reflect the surrounding environment. The building is set against a clear sky.

# Introduction to the Research Landscape in Germany



# Facts and figures



Ca. 1,000 publicly funded research institutions



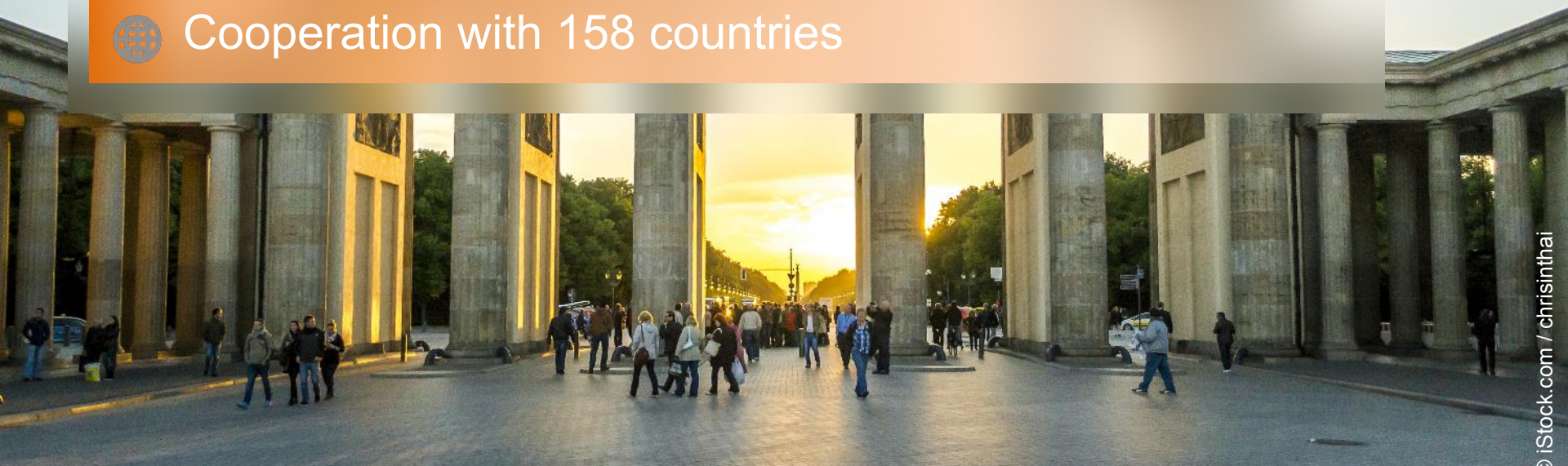
€100bn = 3.07% GDP



686,349 personnel in the R&D sector



Cooperation with 158 countries





# International researchers

in Germany

**Total: 121,100**

Academic staff at universities

Academic staff at non-university research institutions

Guest researchers





# Pillars of the German research sector

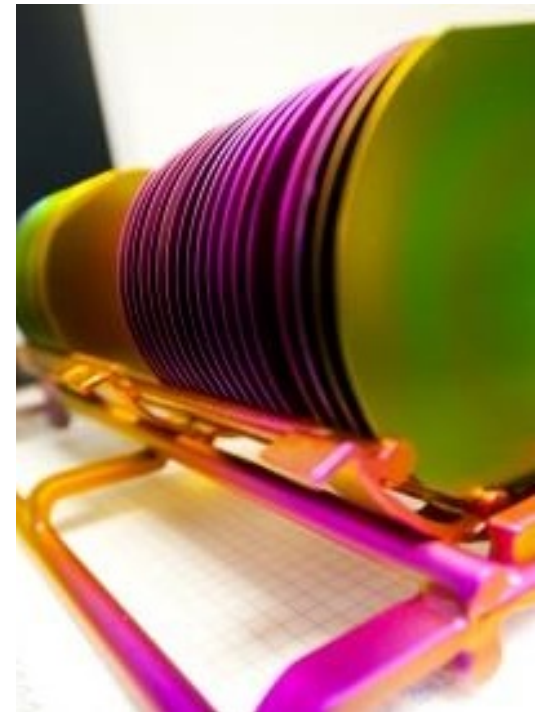
## Universities (HEIs)



## Non-university research institutes



## Industrial research



# Universities

- Approx. 400 HEIs – 156 authorised to confer doctorates
- Almost 28,000 international doctoral candidates enrolled
- Principle of uniting learning, instruction and research
- Excellence Strategy = 533 m euros per year for cutting-edge research





# The Big Four Research Associations

Institution	Institutes	Budget	Staff in total
Max Planck Society	86 institutes	2.4 bn euros	23,767
Helmholtz Association	19 research centres	4.7 bn euros	40,000
Fraunhofer-Gesellschaft	72 institutes	2.6 bn euros	26,600
Leibniz Association	93 institutes	2.1 bn euros	19,723





86 institutes



€2.4bn



15,209 researchers



52,1% international researchers

MAX PLANCK INSTITUT



# Research for the future



MAX-PLANCK-GESELLSCHAFT



Source: Max-Planck-Gesellschaft Annual Report 2018

- Basic research in all scientific fields, interdisciplinary
- Supporting innovative ideas
- Person-centered
- 15,000 publications per year
- 18 Nobel laureates
- Since 1948

■ [www.mpg.de](http://www.mpg.de)



93 institutes



€2.1bn



10,517 researchers



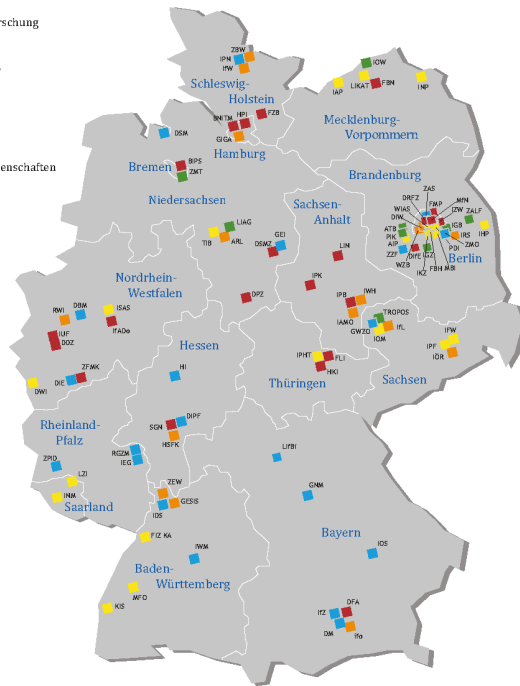
23,4% international researchers



# Theoria cum praxi

## Science for the benefit and good of humanity

- Sektion A:  
Geisteswissenschaften und Bildungsforschung
- Sektion B:  
Wirtschafts- und Sozialwissenschaften,  
Raumwissenschaften
- Sektion C:  
Lebenswissenschaften
- Sektion D:  
Mathematik, Natur- und Ingenieurwissenschaften
- Sektion E:  
Umwelbwissenschaften



Source: Die Leibniz Gemeinschaft im Überblick 2017

- Investigation of socially, economically and ecologically relevant issues
- Natural sciences, engineering, environmental sciences, economics, spatial sciences, social sciences and humanities
- Knowledge transfer in politics, science, business and the society
- [www.leibniz-gemeinschaft.de](http://www.leibniz-gemeinschaft.de)



19 research centres



€4.7bn



Over 40,000 staff members



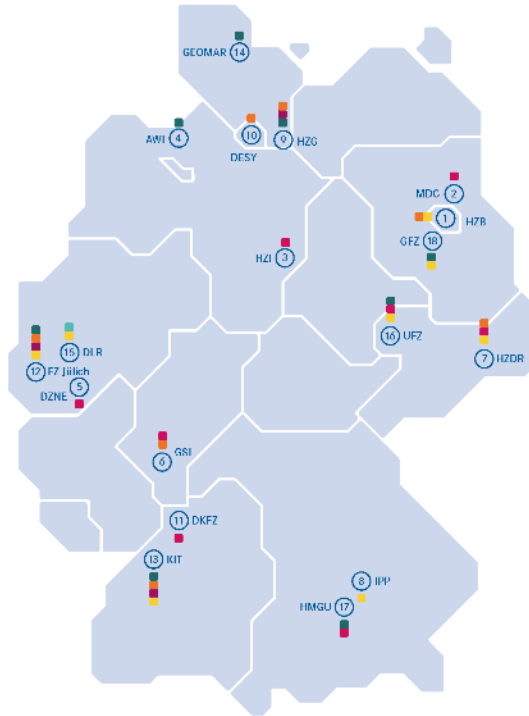
10,176 international researchers



# Sustainable research

HELMHOLTZ SPITZENFORSCHUNG FÜR  
GROSSE HERAUSFORDERUNGEN

## Shaping the future



Source: Helmholtz Annual Report 2018

- Research to solve the grand challenges of society, science and industry
- Six research fields in natural sciences, biology and medicine
- Large-scale devices and infrastructure
- 400 patent and property right applications annually
- Since 1995
- [www.helmholtz.de](http://www.helmholtz.de)



72 institutes



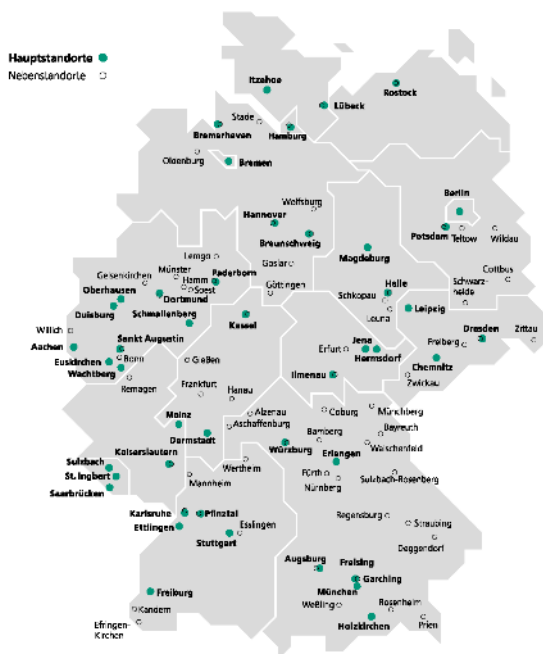
€2.6bn



26,600 staff members



# Research dedicated to the future



- Application-oriented research for industry and society
- Health, safety, communication, mobility, energy and environment
- Contract research for industry and government (70%)
- Since 1949
- [www.fraunhofer.de](http://www.fraunhofer.de)

Source: Fraunhofer Annual Report 2018



# Industrial research

---

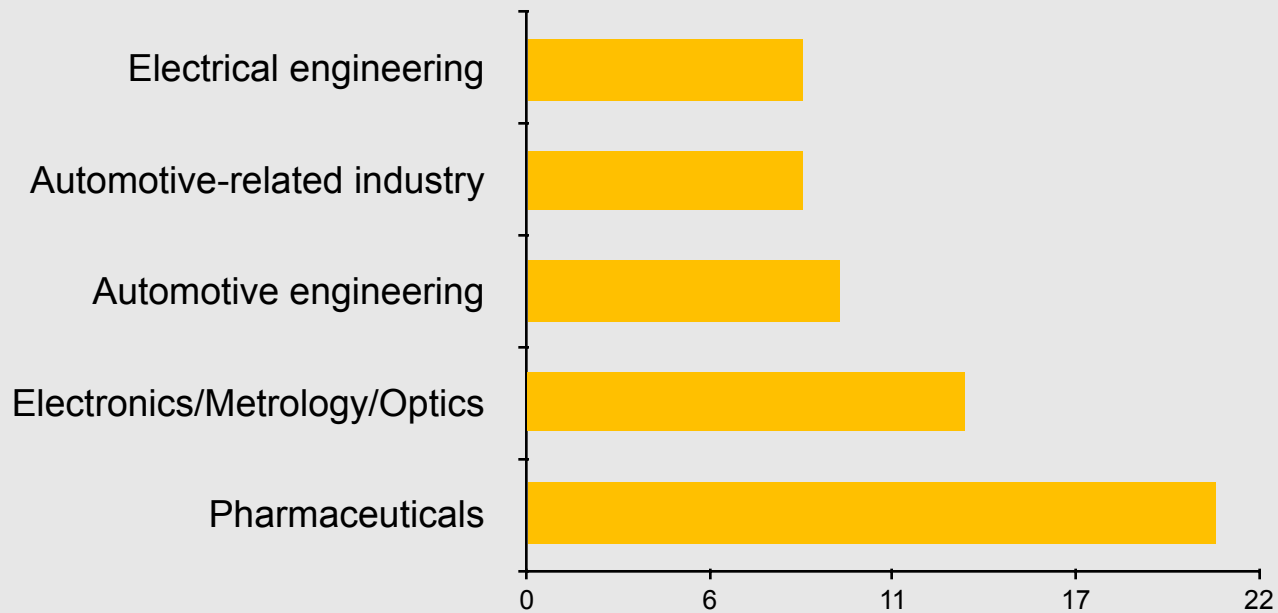
- 69% of all research funding in Germany comes from business and industry
- Innovation-driving sectors: pharmaceuticals, electronics, automotive engineering, mechanical engineering
- Technology transfer – Cluster formation, networks





# Innovation drivers

---



Expenditures for innovations in % of turnover 2017

Source: Federal Statistical Office



# Germany – Driving innovation

---

- 9 German corporations within the top 20 European innovation drivers

**SIEMENS**

**Continental** 



**BOSCH**



Boehringer  
Ingelheim

**SAP**



**DAIMLER**



**DAAD Funding for  
PhD Studies in Germany**

# Paths to a PhD

## Individual vs. structured PhD

---

### Individual PhD

- Individual research under supervision of supervisor
- Optional courses or other forms of teaching / learning
- Mostly informal admission and marginal formalisation

### Structured PhD

- Guidance by a team of supervisors / supervising committee
- Mandatory, fixed supporting curriculum (interdisciplinary)
- Defined application process
- Offered by research training groups / graduate schools

# Financing your PhD

---

- No tuition fees
- Living costs: approx. 918€ (\$1,015) monthly
- Can be self- or parent-financed (external funding)
- Financed by the German supervisor or host institution
- Individual funding: research associate contracts (part-time)
- Apply for a scholarship



# Research grants – Doctoral programmes in Germany (open to all fields and topics)

---

- 🌸 **In Brief**      Doctoral project (individual or structured programme) at a state-run or state-recognised university or non-university research institute in Germany
- 🌸 **Who?**            PhD students
- 🌸 **Duration?**        36 months
- 🌸 **Value?**            1,200 €/month + additional allowances

**DAAD**

[www.funding-guide.de](http://www.funding-guide.de)

Research in  
Germany  
  
Land of Ideas

# Research grants – Bi-nationally supervised doctoral degrees

---

- 🌻 **In Brief**      Doctoral degree at home university with integrated research phases in Germany
- 🌻 **Who?**              PhD students
- 🌻 **Duration?**        Up to 2 years
- 🌻 **Value?**             Grant: 1,200 €/month + additional allowances during stay(s) in Germany



[www.funding-guide.de](http://www.funding-guide.de)



# Research grants – One-year and short-term grants

---

-  **In Brief**      Research project at a state-run or state-recognised university or non-university research institute in Germany
-  **Who?**              PhD students  
                                 Postdocs
-  **Duration?**        One-year grants: 7–12 months  
                                 Short-term grants: 1–6 months
-  **Value?**             1,200 €/month + additional allowances

**DAAD**

[www.funding-guide.de](http://www.funding-guide.de)

Research in  
Germany  
  
Land of Ideas

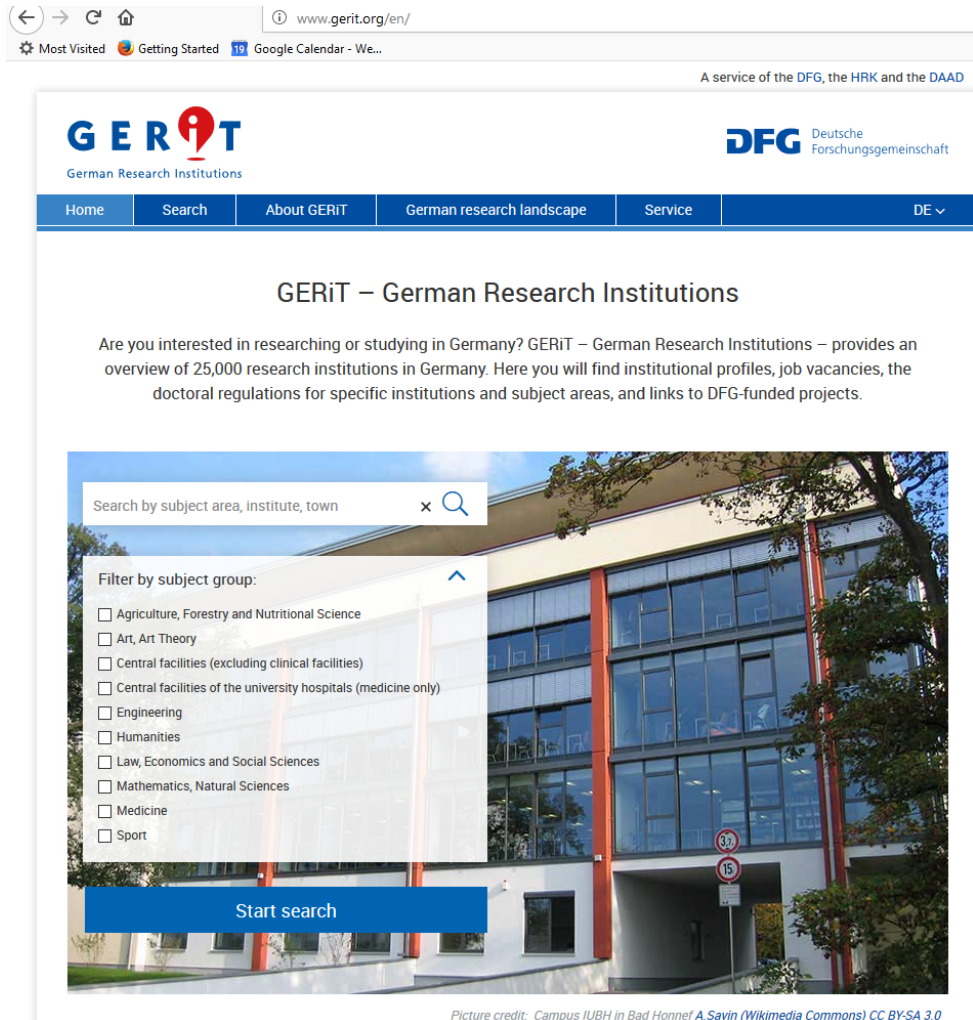
# Main application requirements

---

- Excellent Master's degree (completed less than 6 years ago)
- Convincing, relevant and well-planned research project of high academic standard
- coordinated and agreed with a German supervisor who confirms her/ his supervision in writing, **OR:** Admission letter to structured PhD programme
- Detailed work plan for 3 years of research

**Annual application deadline:** 31 October via [www.funding-guide.de](http://www.funding-guide.de)

# How to find a supervisor: www.gerit.org/en



The screenshot shows the GERiT website interface. At the top, there is a navigation bar with the GERiT logo (German Research Institutions) and the DFG logo (Deutsche Forschungsgemeinschaft). Below the navigation bar, the main heading reads "GERiT – German Research Institutions". A paragraph of text explains the website's purpose: "Are you interested in researching or studying in Germany? GERiT – German Research Institutions – provides an overview of 25,000 research institutions in Germany. Here you will find institutional profiles, job vacancies, the doctoral regulations for specific institutions and subject areas, and links to DFG-funded projects."

Below the text, there is a search interface. It includes a search bar with the placeholder text "Search by subject area, institute, town" and a magnifying glass icon. A dropdown menu titled "Filter by subject group:" is open, listing various subject areas with checkboxes:

- Agriculture, Forestry and Nutritional Science
- Art, Art Theory
- Central facilities (excluding clinical facilities)
- Central facilities of the university hospitals (medicine only)
- Engineering
- Humanities
- Law, Economics and Social Sciences
- Mathematics, Natural Sciences
- Medicine
- Sport

At the bottom of the search interface, there is a blue button labeled "Start search". The background of the search interface is a photograph of a modern building with large glass windows, identified as Campus IUBH in Bad Honnef.

Picture credit: Campus IUBH in Bad Honnef A.Savin (Wikimedia Commons) CC BY-SA 3.0

Research in  
Germany  
  
Land of Ideas

# Websites and databases

---

- <http://www.research-in-germany.org> (general info)
- [www.phdgermany.de](http://www.phdgermany.de) (doctoral positions)
- <http://www.funding-guide.de> (scholarships)
- <http://www.gerit.org> (research contacts)
- <http://www.higher-education-compass.de> (structured programmes)



A photograph of a modern building with a curved facade. The building features multiple levels of balconies with dark metal railings. The balconies are cantilevered and have a dark, possibly black, finish. The windows are large and framed in dark metal, reflecting the sky and surrounding environment. The building's design is characterized by its sweeping, curved lines and the repetition of the balcony structure.

**The supervisor – the elusive individual?**

# Prepare the first email contact carefully:

---

- **Address it to ONE person, and spell the name correctly! Find out if it is a lady or a gentleman, and use his/her title**
- **Subject line: e.g. „Research cooperation in XYZ...“**
- **Keep in mind: You are looking to convince a fellow researcher of your value/ potential impact for him/her – show what you can offer!**
- **Introduce yourself briefly: academic background, current employer and research interest (and experience)**
- **Mention how you became aware of the researcher addressed, ideally: „I read your recent publication on ABC in journal XYZ with great interest as I am currently also working on .... for my PhD“**
- **THEN draw the logical conclusion: „...therefore I wanted to inquire whether you would be interested and available to act as my supervisor for my PhD project titled so-and-so“**
- **Attach only an abstract/ concept note (max 2 pages), BUT offer to send the full proposal if s/he is interested**



# Prepare the first email contact carefully:

---

- **IMPORTANT:** If you don't receive a response within 10 days, send a polite reminder
- Use your networks (lecturers, Master thesis supervisor, DAAD Alumni etc) to help you establish contacts





# The DAAD in East Africa

The screenshot shows the DAAD Kenya website. At the top left is the DAAD Kenya logo with the text 'Deutscher Akademischer Austauschdienst German Academic Exchange Service'. There are language options for 'Deutsch' and 'English', and a 'DAAD Homepage' button. A navigation menu includes 'Home', 'Study & Research In Germany', 'Study & Research In East Africa', 'Find Funding', and 'About Us'. The main banner features a cityscape of Nairobi with the text: 'DAAD In Kenya DAAD Regional Office Nairobi. The DAAD Regional Office for Africa is responsible for Pan African Initiatives and Co-operation with Universities in the wider Eastern Africa region.' Below this is a 'Contact' section with a flag icon and the text: 'We provide information and guidance on study, research and funding opportunities in Germany and Sub-Saharan Africa countries with a focus on East Africa. Please feel free to contact us with your inquiries.' There is also a 'Corona Virus Information on Effects on the Work of the DAAD' section with a photo of a person wearing a mask. At the bottom, there is a 'Finding scholarships' section with a dropdown menu set to 'Kenya' and a radio button for 'I am from Germany'. On the right side of the screenshot, there is a map of East Africa with a red pin on Nairobi, and contact information for the DAAD Kenya Regional Office Nairobi: 'Address: Madison Insurance House, 3rd floor, Upper Hill Close, P.O. Box 14050 00800 Nairobi Telephone: +254 (733) 92 99 29 E-Mail: info.nairobi@daad.de'.

-Established in 1973

- <https://www.daad.or.ke/en/>

-Facebook: DAAD Kenya

-Virtual visiting hours: Thursdays

10 - 11 am. For registration: [https://](https://www.daad.or.ke/en/webinar-schedule/)

[www.daad.or.ke/en/webinar-schedule/](https://www.daad.or.ke/en/webinar-schedule/)

-Programme Officer:

Anja Bengelstorff

[bengelstorff@daad.de](mailto:bengelstorff@daad.de)



**Thanks for  
attending and  
see you next  
time!**

