



ENRICH in Brazil – Project Overview

Brazil, 26 February 2019

Webinar ENRICH in Brazil & EURAXESS

Dr. Markus Will, Fraunhofer IPK



ENRICH is an initiative of the European Union, executed in Brazil by the CEBRABIC project, that has received funding from the European Union's Horizon 2020 research and innovation programme under grant agreement No 733531. Responsibility for the information and views set out in this publication lies entirely with the authors.

www.brazil.enrichcentres.eu
brazil@enrichcentres.eu



ENRICH is a global network of centres and hubs that promotes the internationalisation of science, technology and innovation.



CEBRABIC Project Establishes ENRICH in Brazil

Main Objectives of CEBRABIC

- Encouraging cooperation among European and Brazilian Research, Innovation and Business (R&I&B) organizations
- Establish and deploy a self sustainable Centre for Europe-Brazil Business & Innovation Cooperation within 48 month

Key Facts of CEBRABIC

Duration: 01/2017 – 12/2020 (48 Month)

Total Budget: 2,9 Mio €

Consortium Members: 12



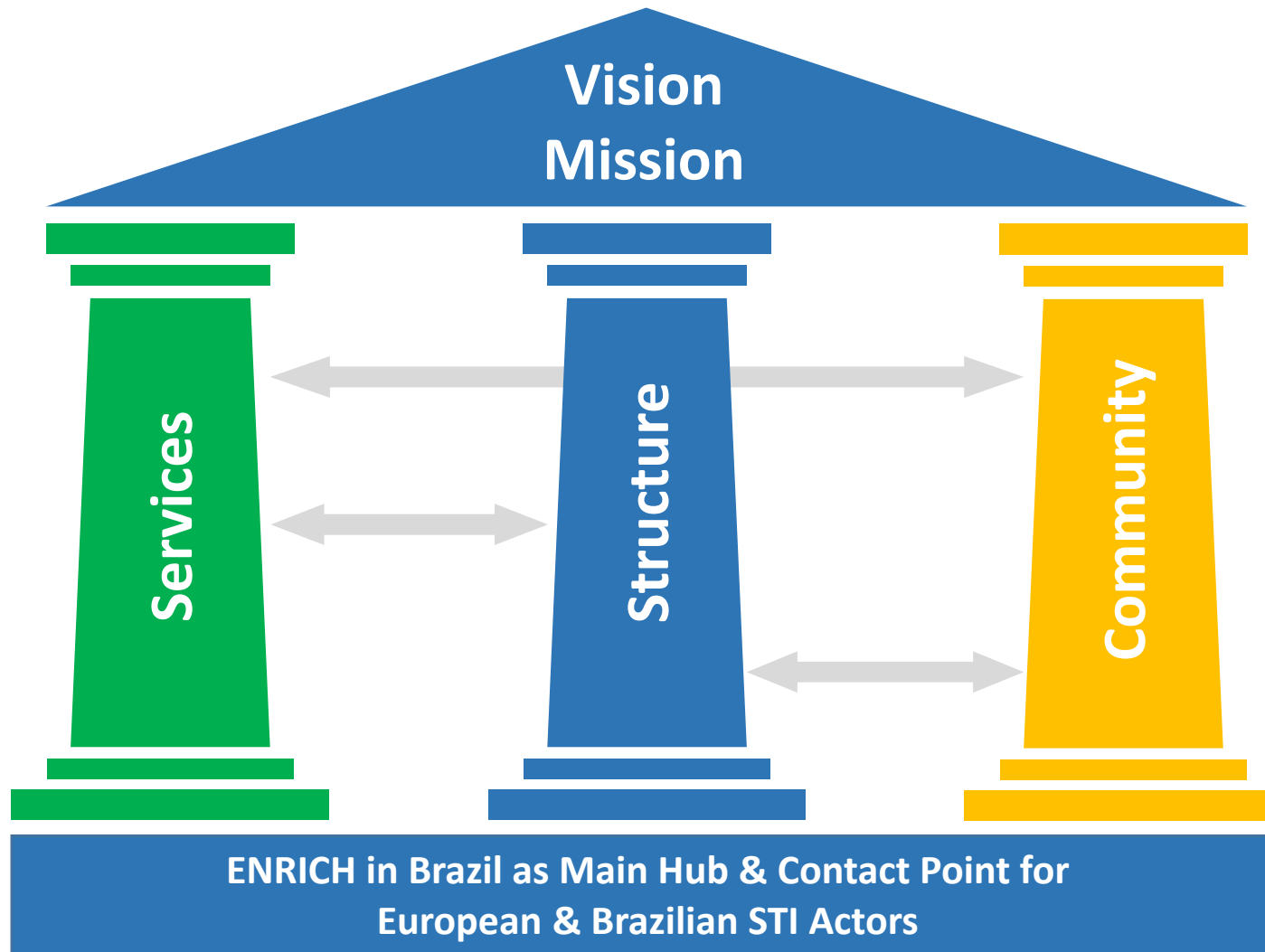
CEBRABIC Consortium: 12 Partner Organisations (Brazil & Europe)

- BALANCED INSTITUTIONAL DIVERSITY**
- Companies (SPI, RCISD)
 - Universities (UNICAMP, SU)
 - Funding agencies (FFG)
 - R&I organizations (FHG, DLR)
 - Not-for-profit organisations (ANPEI, CONFAP, CNI, EBN, IASP)

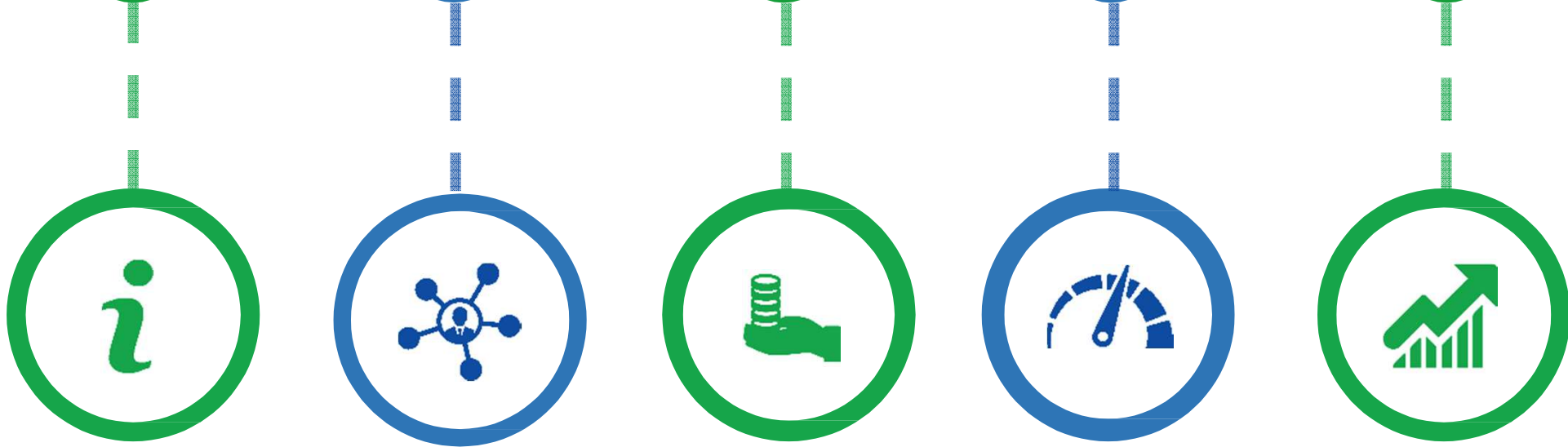


AGENDA

ENRICH in Brazil: Main Pillars to put Vision / Mission into Practice







GET INFORMED!

Step-by-Step Guidelines for doing Business in BR & EU, Market & Research Studies, Newsfeed & Hot Topics in BR & EU,...

GET CONNECTED!

Business Roundtables & Matchmaking Events, Organisation of Working & Delegation Visits,...

GET FUNDED!

Find partners & funding opportunities, Pitching Workshops, Training on Proposal Writing,...

GET GOING!

Soft-landing (workspace & infrastructure), Training on Innovation Management, Training on Tech Transfer,...

GET VISIBLE!

Higher the Visibility, Marketing Support, Business Development & Consulting Services,...

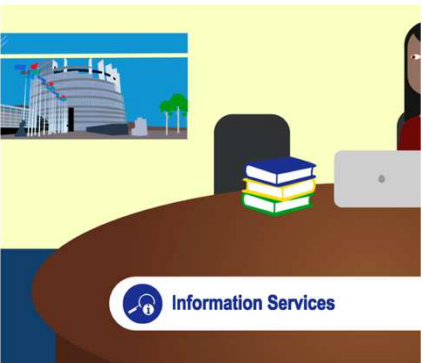
6 – GET ADVICE!



Legal support, IPR advice, RRI Toolbox, Patent Advice,..



Information Services



5 Webinars

- 2 – STI Landscape BR & EU
- 1 – BR Culture
- 1 – Applied Research Sector with thematic Focus
- 1 – Thematic Focus Health

3 Guidelines

- 1 – H2020 Participation
- 2 – Facts & Figures EU / BR

Training & Infrastructure



5 Trainings

- 3 – H2020 Trainings (BR)
 - 2 – MSCA
 - 1 – ERC
- 1 – Preparation Training (Boot Camp) (EU)
- 1 – Impact Evaluation of R&I Programmes (BR)

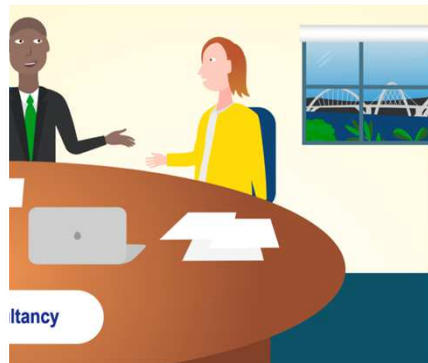
Matchmaking & Events



4 Matchmaking Events

- 2 – Info Session about Brazil & Internationalisation Strategies (EU)
- 1 – EU Exhibition Showcase (BR)
- 1 – Innovation Boot Camp (BR)
- 1 – Innovation Tour (*postponed*)

Consultancy Services



5 Consultancy Services

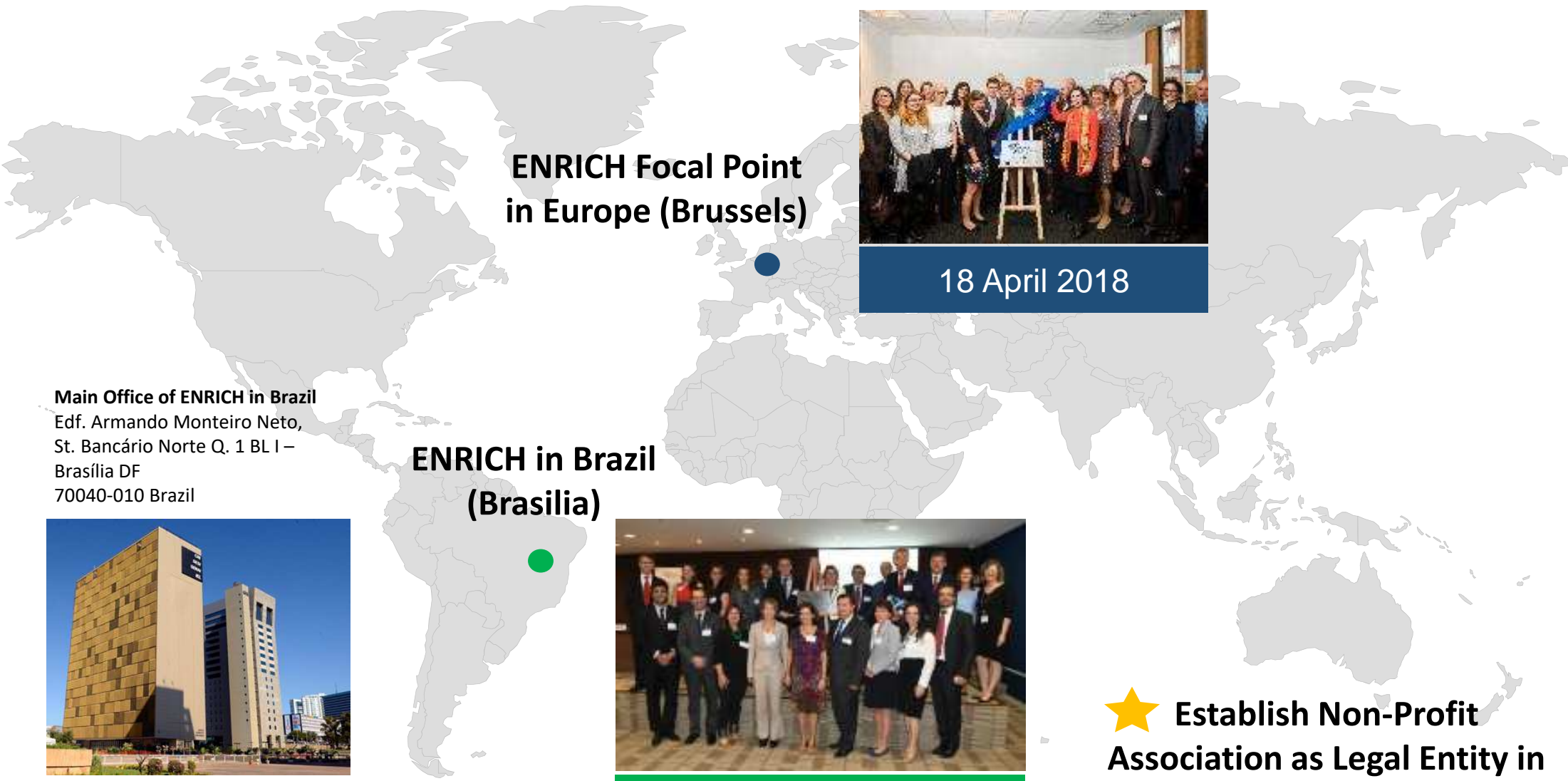
- 2 – Customized Service on Funding Possibilities
- 2 – Customized Service on Partner Search
- 1 – Customized Service on Funding & Partner Search

Participants (“Clients”):
ca. 480 (12/2018)

Customer Satisfaction

Survey results; based on 118 filled questionnaires

■ Excellent	60%
■ Very Good	33%
■ Good	5%
■ Satisfactory	3%
■ Poor	0%



**ENRICH Focal Point
in Europe (Brussels)**



18 April 2018

Main Office of ENRICH in Brazil
Edf. Armando Monteiro Neto,
St. Bancário Norte Q. 1 BL I –
Brasília DF
70040-010 Brazil

**ENRICH in Brazil
(Brasilia)**



29 November 2017

**★ Establish Non-Profit
Association as Legal Entity in
Brazil – March 2019**

Founding Partners: ANPEI, RCISD, SPI, FhG



Brazil & Europe



ENRICH in Brazil Ecosystem



Service Provider

Soft Landing Hub

Headquarters in Brasilia & planned Branches in SP & RJ

ENRICH Supporters & Ambassadors

Individuals & Organisations as Beneficiaries



How to involve?



- ✓ Become part of our Community!
- ✓ Stay tuned about our Activities via Social Channels & Newsletter Subscription!



www.brazil.enrichcentres.eu



brazil@enrichcentres.eu



https://twitter.com/ENRICH_brazil



<https://www.facebook.com/ENRICHinBrazil>



<https://www.linkedin.com/company/11125511>

ENRICH in Brazil is made possible with the support of the CEBRABIC project and its partners



Fraunhofer
IPK

Fraunhofer Institute for Production
Systems and Design Technology (IPK)

ANPEI



DLR Project Management Agency



CNI
National Confederation of Industry
Brazil

CNI. THE STRENGTH OF THE BRAZILIAN INDUSTRY



CONFAP
Conselho Nacional de Desenvolvimento Científico e Tecnológico



ebn
Innovation network



FFG

Österreichische
Forschungsfoerderungsgesellschaft



IASP

International Association of Scientific Parks
and Areas of Innovation



RCISD
smart. flexible. innovative.

spi 20
1994-2014

Sociedade Portuguesa de Inovação

**Sabancı
Universitesi**



UNICAMP